



**ELECTRONIC COPY**

LG635428627  
Report verification at igi.org



May 28, 2024

IGI Report Number **LG635428627**

Description **LABORATORY GROWN DIAMOND**

Shape and Cutting Style **CUT CORNERED  
RECTANGULAR MODIFIED  
BRILLIANT**

Measurements **7.07 X 4.71 X 3.36 MM**

**GRADING RESULTS**

Carat Weight **1.04 CARAT**

Color Grade **FANCY INTENSE YELLOW**

Clarity Grade **VS 1**

**LABORATORY GROWN DIAMOND REPORT**

May 28, 2024

IGI Report Number **LG635428627**

Description **LABORATORY GROWN DIAMOND**

Shape and Cutting Style **CUT CORNERED RECTANGULAR  
MODIFIED BRILLIANT**

Measurements **7.07 X 4.71 X 3.36 MM**

**GRADING RESULTS**

Carat Weight **1.04 CARAT**

Color Grade **FANCY INTENSE YELLOW**

Clarity Grade **VS 1**

**ADDITIONAL GRADING INFORMATION**

Polish **VERY GOOD**

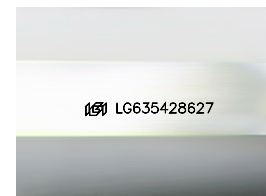
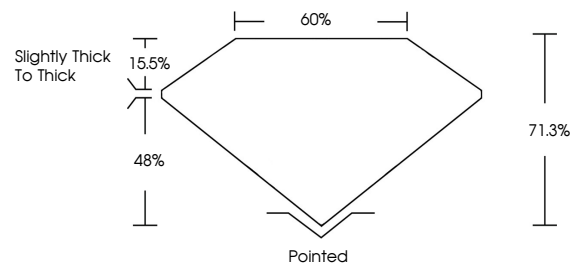
Symmetry **EXCELLENT**

Fluorescence **NONE**

Inscription(s) **IGI LG635428627**

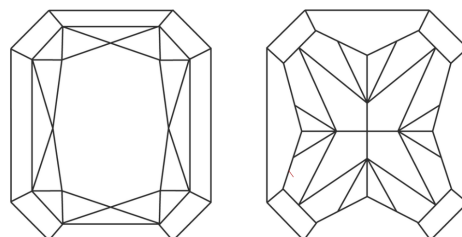
Comments: This Laboratory Grown Diamond was created by Chemical Vapor Deposition (CVD) growth process.

**PROPORTIONS**



Sample Image Used

**CLARITY CHARACTERISTICS**



**KEY TO SYMBOLS**

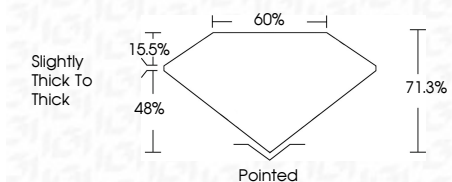
Red symbols indicate internal characteristics.  
Green symbols indicate external characteristics.

**COLOR**

D E F G H I J Faint Very Light Light

**CLARITY**

IF	VS <sup>1-2</sup>	VS <sup>1-2</sup>	SI <sup>1-2</sup>	I <sup>1-3</sup>
Internally Flawless	Very Very Slightly Included	Very Slightly Included	Slightly Included	Included



**ADDITIONAL GRADING INFORMATION**

Polish **VERY GOOD**

Symmetry **EXCELLENT**

Fluorescence **NONE**

Inscription(s) **IGI LG635428627**

Comments: This Laboratory Grown Diamond was created by Chemical Vapor Deposition (CVD) growth process.



**IGI**



May 28, 2024  
IGI Report No. LG635428627  
CUT CORNERED RECT. MODIFIED BRILLIANT  
7.07 X 4.71 X 3.36 MM  
1.04 CARAT  
FANCY INTENSE YELLOW  
VS 1  
71.3%  
48%  
Slightly Thick To Thick  
Pointed  
Polish VERY GOOD  
Symmetry EXCELLENT  
Fluorescence NONE  
Inscription(s) IGI LG635428627  
Comments: This Laboratory Grown Diamond was created by Chemical Vapor Deposition (CVD) growth process.