

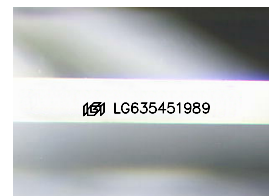
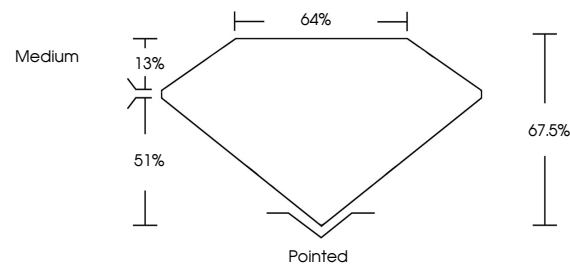


**ELECTRONIC COPY**

## LABORATORY GROWN DIAMOND REPORT

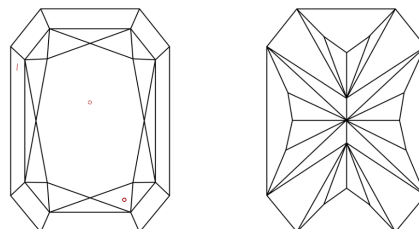
LG635451989  
Report verification at [igi.org](https://igi.org)

## PROPORTIONS



Sample Image Used

## CLARITY CHARACTERISTICS



## KEY TO SYMBOLS

Red symbols indicate internal characteristics.  
Green symbols indicate external characteristics.

## COLOR

D E F G H I J Faint Very Light Light

## CLARITY

IF	VVS <sup>1-2</sup>	VS <sup>1-2</sup>	SI <sup>1-2</sup>	I <sup>1-3</sup>
Internally Flawless	Very Very Slightly Included	Very Slightly Included	Slightly Included	Included



© IGI 2020, International Gemological Institute

FD - 10 20

**www.igi.org**

## DIAMOND REPORT



May 22, 2024

IGI Report Number **LG635451989**Description **LABORATORY GROWN DIAMOND**

Shape and Cutting Style

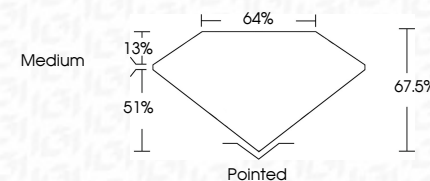
Measurements **8.59 X 5.91 X 3.99 MM**

## GRADING RESULTS

Carat Weight 1.73 CARAT

Color Grade F

Clarity Grade VS 2



### ADDITIONAL GRADING INFORMATION

Polish **EXCELLENT**Symmetry **EXCELLENT**Fluorescence **NONE**Inscription(s)  LG635451989

Comments: This Laboratory Grown Diamond was created by Chemical Vapor Deposition (CVD) growth process and may include post-growth treatment.  
Type IIa



May 22, 2024	CU CORNBED RECT. MODIFIED BRILLIANT	1.73 CARAT	V6.2	Polished	EXCELLENT	NONE	169 LG365461989
GI REPORTED NO LG363846199			67.5%	EXCELLENT	EXCELLENT		
5.59 X 5.91 X 3.90 MM	Color Weight		64%	Medium			
	Color Grade						
	Clarity Grade						
	Depth						
	Table						
	Girdle						
	Culet						
	Polish						
	Symmetry						
	Fluorescence						
	Inscription(s)						

Comments:

The Laboratory Crown Diamond was  
 a CVD growth process and may include  
 post-growth treatment.

Type IIA