



ELECTRONIC COPY

LG635452961
Report verification at igi.org



May 21, 2024

IGI Report Number **LG635452961**

Description **LABORATORY GROWN DIAMOND**

Shape and Cutting Style **EMERALD CUT**

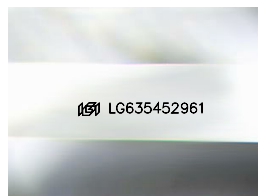
Measurements **6.78 X 4.59 X 3.27 MM**

GRADING RESULTS

Carat Weight **1.01 CARAT**

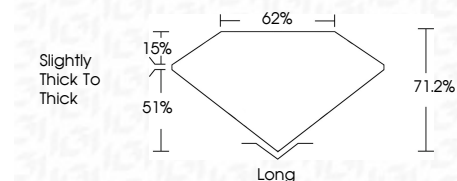
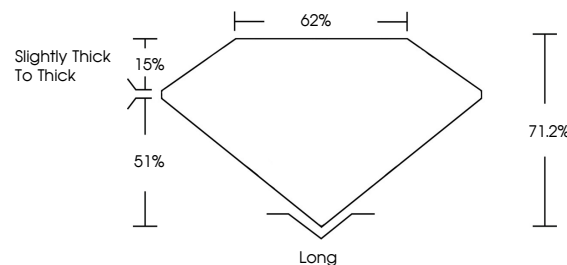
Color Grade **D**

Clarity Grade **VVS 1**



Sample Image Used

PROPORTIONS



ADDITIONAL GRADING INFORMATION

Polish **EXCELLENT**

Symmetry **EXCELLENT**

Fluorescence **NONE**

Inscription(s) **IGI LG635452961**

Comments: This Laboratory Grown Diamond was created by Chemical Vapor Deposition (CVD) growth process and may include post-growth treatment. Type IIa



IGI

COLOR

D E F G H I J Faint Very Light Light

CLARITY

IF	VVS ¹⁻²	VS ¹⁻²	SI ¹⁻²	I ¹⁻³
Internally Flawless	Very Very Slightly Included	Very Slightly Included	Slightly Included	Included



May 21, 2024
IGI Report No. LG635452961
EMERALD CUT

6.78 X 4.59 X 3.27 MM
1.01 CARAT
Color Grade D
Clarity Grade VVS 1
Table 71.2%
Girdle 62%
Slightly thick to thick
Culet Long
Polish EXCELLENT
Symmetry EXCELLENT
Fluorescence NONE
Inscription(s) IGI LG635452961

Comments: This Laboratory Grown Diamond was created by Chemical Vapor Deposition (CVD) growth process and may include post-growth treatment. Type IIa