



ELECTRONIC COPY

LABORATORY GROWN DIAMOND REPORT

May 17, 2024
IGI Report Number LG635453465
Description LABORATORY GROWN DIAMOND
Shape and Cutting Style CUT CORNERED RECTANGULAR MODIFIED BRILLIANT
Measurements 7.40 X 5.11 X 3.19 MM

GRADING RESULTS

Carat Weight 1.07 CARAT
Color Grade D
Clarity Grade INTERNALLY FLAWLESS

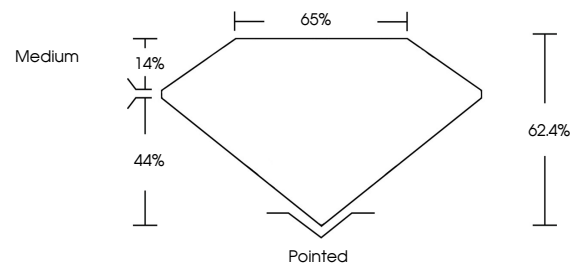
ADDITIONAL GRADING INFORMATION

Polish EXCELLENT
Symmetry EXCELLENT
Fluorescence NONE

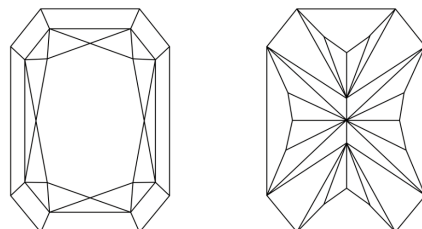
Inscription(s) IGI LG635453465

Comments: This Laboratory Grown Diamond was created by Chemical Vapor Deposition (CVD) growth process and may include post-growth treatment. Type IIa

PROPORTIONS

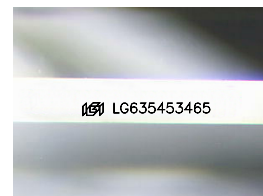


CLARITY CHARACTERISTICS



KEY TO SYMBOLS

Red symbols indicate internal characteristics.
Green symbols indicate external characteristics.



Sample Image Used

COLOR

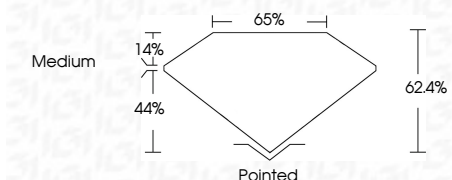
D E F G H I J Faint Very Light Light

CLARITY

Table with 5 columns: IF, VS 1-2, VS 1-2, SI 1-2, I 1-3. Rows: Internally Flawless, Very Very Slightly Included, Very Slightly Included, Slightly Included, Included.



May 17, 2024
IGI Report Number LG635453465
Description LABORATORY GROWN DIAMOND
Shape and Cutting Style CUT CORNERED RECTANGULAR MODIFIED BRILLIANT
Measurements 7.40 X 5.11 X 3.19 MM
GRADING RESULTS
Carat Weight 1.07 CARAT
Color Grade D
Clarity Grade INTERNALLY FLAWLESS



ADDITIONAL GRADING INFORMATION

Polish EXCELLENT
Symmetry EXCELLENT
Fluorescence NONE
Inscription(s) IGI LG635453465

Comments: This Laboratory Grown Diamond was created by Chemical Vapor Deposition (CVD) growth process and may include post-growth treatment. Type IIa



IGI



May 17, 2024
IGI Report No. LG635453465
CUT CORNERED RECT. MODIFIED BRILLIANT
7.40 X 5.11 X 3.19 MM
1.07 CARAT
D
Color Grade D
LF
62.4%
65%
Medium
Pointed
EXCELLENT
EXCELLENT
NONE
IGI LG635453465

Comments: This Laboratory Grown Diamond was created by Chemical Vapor Deposition (CVD) growth process and may include post-growth treatment. Type IIa