



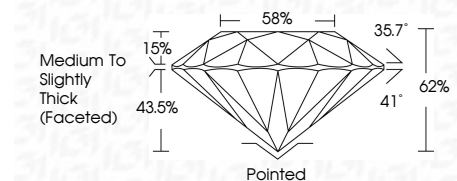
ELECTRONIC COPY

LG635455621 Report verification at igi.org



July 12, 2024 IGI Report Number LG635455621 Description LABORATORY GROWN DIAMOND Shape and Cutting Style ROUND BRILLIANT Measurements 6.55 - 6.59 X 4.08 MM

GRADING RESULTS Carat Weight 1.09 CARAT Color Grade D Clarity Grade VVS 2 Cut Grade IDEAL



ADDITIONAL GRADING INFORMATION Polish EXCELLENT Symmetry EXCELLENT Fluorescence NONE Inscription(s) LG635455621 Comments: As Grown - No indication of post-growth treatment. This Laboratory Grown Diamond was created by High Pressure High Temperature (HPHT) growth process. Type II



July 12, 2024 IGI Report No LG635455621 ROUND BRILLIANT 6.55 - 6.59 X 4.08 MM 1.09 CARAT D VVS 2 IDEAL 62% 88% Medium To Slightly Thick (Faceted) Pointed EXCELLENT EXCELLENT NONE NONE LG635455621

Comments: As Grown - No indication of post-growth treatment. This Laboratory Grown Diamond was created by High Pressure High Temperature (HPHT) growth process. Type II

LABORATORY GROWN DIAMOND REPORT

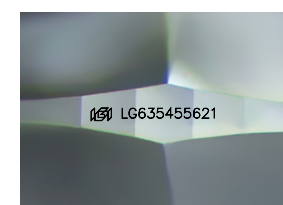
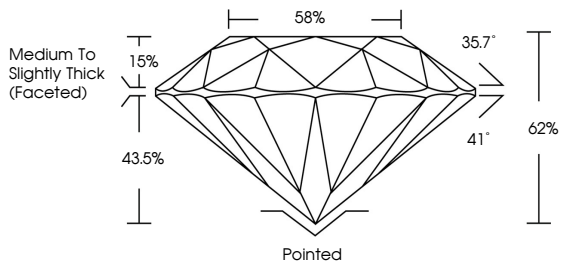
July 12, 2024 IGI Report Number LG635455621 Description LABORATORY GROWN DIAMOND Shape and Cutting Style ROUND BRILLIANT Measurements 6.55 - 6.59 X 4.08 MM

GRADING RESULTS Carat Weight 1.09 CARAT Color Grade D Clarity Grade VVS 2 Cut Grade IDEAL

ADDITIONAL GRADING INFORMATION Polish EXCELLENT Symmetry EXCELLENT Fluorescence NONE Inscription(s) LG635455621

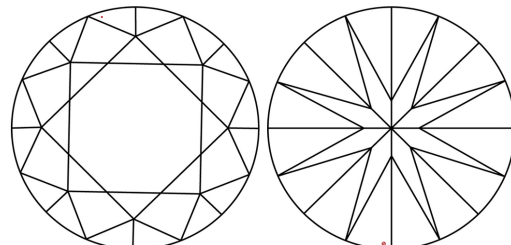
Comments: As Grown - No indication of post-growth treatment. This Laboratory Grown Diamond was created by High Pressure High Temperature (HPHT) growth process. Type II

PROPORTIONS



Sample Image Used

CLARITY CHARACTERISTICS



KEY TO SYMBOLS Red symbols indicate internal characteristics. Green symbols indicate external characteristics.

COLOR scale from D to J, with labels Faint, Very Light, Light

CLARITY scale from IF to I 1-3, with labels Internally Flawless, Very Very Slightly Included, Very Slightly Included, Slightly Included, Included

