



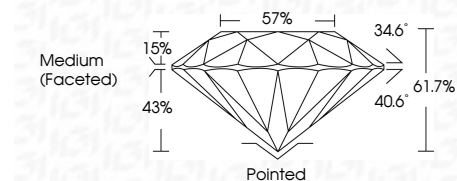
ELECTRONIC COPY

LG635455731 Report verification at igi.org



July 12, 2024 IGI Report Number LG635455731 Description LABORATORY GROWN DIAMOND Shape and Cutting Style ROUND BRILLIANT Measurements 6.55 - 6.59 X 4.06 MM

GRADING RESULTS Carat Weight 1.08 CARAT Color Grade E Clarity Grade VVS 1 Cut Grade IDEAL



ADDITIONAL GRADING INFORMATION Polish EXCELLENT Symmetry EXCELLENT Fluorescence NONE Inscription(s) IGI LG635455731 Comments: As Grown - No indication of post-growth treatment. This Laboratory Grown Diamond was created by High Pressure High Temperature (HPHT) growth process. Type II



July 12, 2024 IGI Report No LG635455731 ROUND BRILLIANT 6.55 - 6.59 X 4.06 MM 1.08 CARAT E VVS 1 IDEAL 61.7% 57% Medium (Faceted) Pointed EXCELLENT EXCELLENT NONE IGI LG635455731

Comments: As Grown - No indication of post-growth treatment. This Laboratory Grown Diamond was created by High Pressure High Temperature (HPHT) growth process. Type II

LABORATORY GROWN DIAMOND REPORT

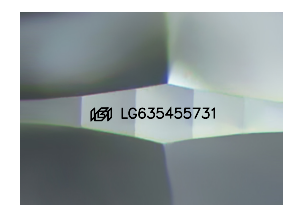
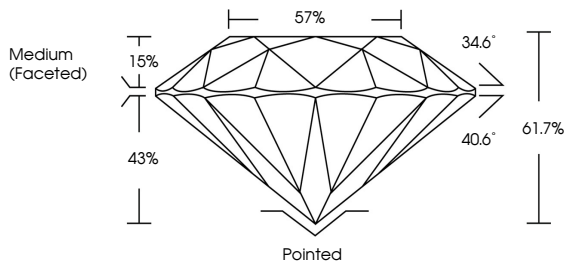
July 12, 2024 IGI Report Number LG635455731 Description LABORATORY GROWN DIAMOND Shape and Cutting Style ROUND BRILLIANT Measurements 6.55 - 6.59 X 4.06 MM

GRADING RESULTS Carat Weight 1.08 CARAT Color Grade E Clarity Grade VVS 1 Cut Grade IDEAL

ADDITIONAL GRADING INFORMATION Polish EXCELLENT Symmetry EXCELLENT Fluorescence NONE Inscription(s) IGI LG635455731

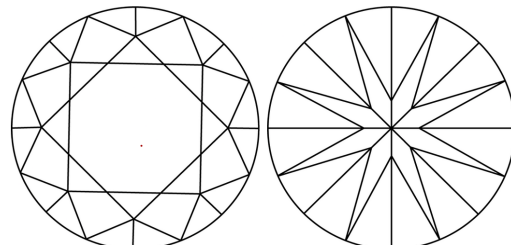
Comments: As Grown - No indication of post-growth treatment. This Laboratory Grown Diamond was created by High Pressure High Temperature (HPHT) growth process. Type II

PROPORTIONS



Sample Image Used

CLARITY CHARACTERISTICS



KEY TO SYMBOLS Red symbols indicate internal characteristics. Green symbols indicate external characteristics.

COLOR scale: D, E, F, G, H, I, J, Faint, Very Light, Light

CLARITY scale: IF, VVS 1-2, VS 1-2, SI 1-2, I 1-3; Internally Flawless, Very Very Slightly Included, Very Slightly Included, Slightly Included, Included

