



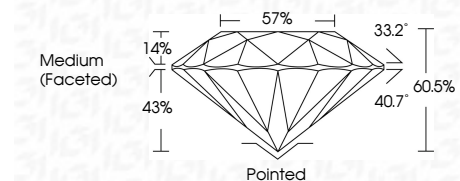
ELECTRONIC COPY

LG635455752
Report verification at igi.org



July 11, 2024
IGI Report Number LG635455752
Description LABORATORY GROWN DIAMOND
Shape and Cutting Style ROUND BRILLIANT
Measurements 6.64 - 6.67 X 4.02 MM

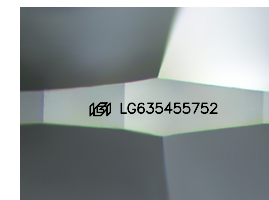
GRADING RESULTS
Carat Weight 1.09 CARAT
Color Grade D
Clarity Grade VS 1
Cut Grade IDEAL



ADDITIONAL GRADING INFORMATION
Polish EXCELLENT
Symmetry EXCELLENT
Fluorescence NONE
Inscription(s) IGI LG635455752
Comments: As Grown - No indication of post-growth treatment.
This Laboratory Grown Diamond was created by High Pressure High Temperature (HPHT) growth process.
Type II

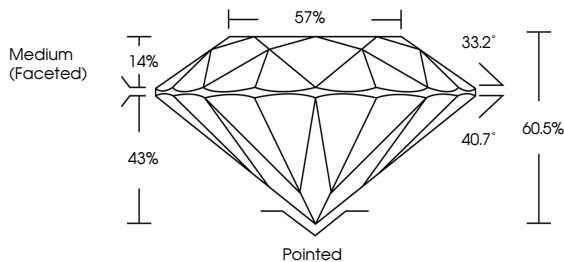


July 11, 2024
IGI Report No LG635455752
ROUND BRILLIANT
6.64 - 6.67 X 4.02 MM
1.09 CARAT
D
VS 1
IDEAL
60.05%
57%
Medium (Faceted)
Pointed
EXCELLENT
EXCELLENT
NONE
IGI LG635455752
Comments: As Grown - No indication of post-growth treatment.
This Laboratory Grown Diamond was created by High Pressure High Temperature (HPHT) growth process.
Type II

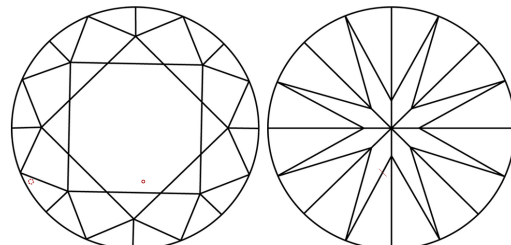


Sample Image Used

PROPORTIONS



CLARITY CHARACTERISTICS



KEY TO SYMBOLS
Red symbols indicate internal characteristics.
Green symbols indicate external characteristics.

Table with 10 columns for color grades: D, E, F, G, H, I, J, Faint, Very Light, Light.

Table with 5 columns for clarity grades: IF, VS 1-2, VS 1-2, SI 1-2, I 1-3. Includes descriptions like Internally Flawless, Very Very Slightly Included, etc.

