



**ELECTRONIC COPY**

**LABORATORY GROWN DIAMOND REPORT**

May 17, 2024  
IGI Report Number **LG635464453**  
Description **LABORATORY GROWN DIAMOND**  
Shape and Cutting Style **PRINCESS CUT**  
Measurements **6.96 X 6.85 X 4.97 MM**

**GRADING RESULTS**

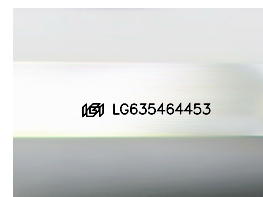
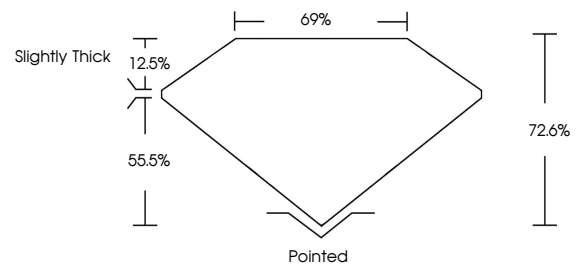
Carat Weight **2.10 CARATS**  
Color Grade **F**  
Clarity Grade **VS 2**

**ADDITIONAL GRADING INFORMATION**

Polish **EXCELLENT**  
Symmetry **EXCELLENT**  
Fluorescence **NONE**  
Inscription(s) **IGI LG635464453**

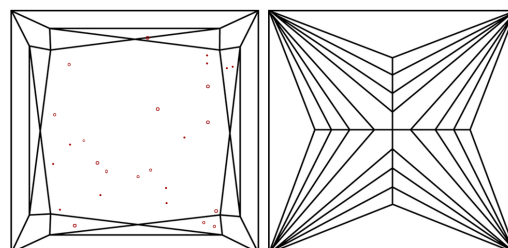
Comments: This Laboratory Grown Diamond was created by Chemical Vapor Deposition (CVD) growth process and may include post-growth treatment. Type IIa

**PROPORTIONS**



Sample Image Used

**CLARITY CHARACTERISTICS**



**KEY TO SYMBOLS**

Red symbols indicate internal characteristics.  
Green symbols indicate external characteristics.

**COLOR**

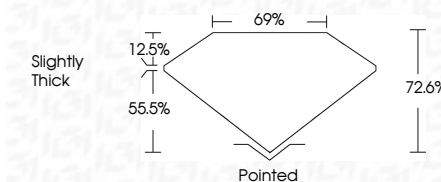
D E F G H I J Faint Very Light Light

**CLARITY**

IF	VS <sup>1-2</sup>	VS <sup>1-2</sup>	SI <sup>1-2</sup>	I <sup>1-3</sup>
Internally Flawless	Very Very Slightly Included	Very Slightly Included	Slightly Included	Included



May 17, 2024  
IGI Report Number **LG635464453**  
Description **LABORATORY GROWN DIAMOND**  
Shape and Cutting Style **PRINCESS CUT**  
Measurements **6.96 X 6.85 X 4.97 MM**  
**GRADING RESULTS**  
Carat Weight **2.10 CARATS**  
Color Grade **F**  
Clarity Grade **VS 2**



**ADDITIONAL GRADING INFORMATION**

Polish **EXCELLENT**  
Symmetry **EXCELLENT**  
Fluorescence **NONE**  
Inscription(s) **IGI LG635464453**  
Comments: This Laboratory Grown Diamond was created by Chemical Vapor Deposition (CVD) growth process and may include post-growth treatment. Type IIa



**IGI**

May 17, 2024  
IGI Report No. **LG635464453**  
**PRINCESS CUT**

**2.10 CARATS**  
Carat Weight **F**  
Color Grade **VS 2**  
Clarity Grade **72.6%**  
Depth **69%**  
Table **Slightly Thick**  
Girdle **Pointed**  
Culet **EXCELLENT**  
Polish **EXCELLENT**  
Symmetry **NONE**  
Fluorescence **IGI LG635464453**  
Inscription(s)

Comments: This Laboratory Grown Diamond was created by Chemical Vapor Deposition (CVD) growth process and may include post-growth treatment. Type IIa