



ELECTRONIC COPY

LABORATORY GROWN DIAMOND REPORT

May 17, 2024
IGI Report Number **LG635464460**
Description **LABORATORY GROWN DIAMOND**
Shape and Cutting Style **PRINCESS CUT**
Measurements **7.04 X 7.03 X 5.02 MM**

GRADING RESULTS

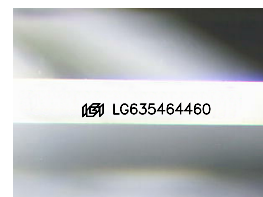
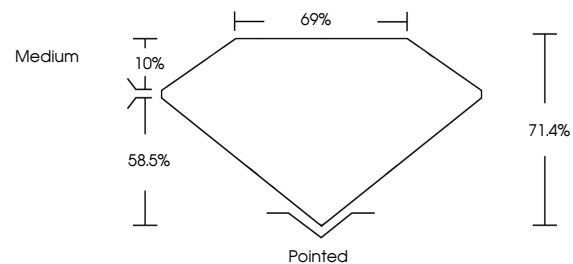
Carat Weight **2.08 CARATS**
Color Grade **G**
Clarity Grade **VS 1**

ADDITIONAL GRADING INFORMATION

Polish **EXCELLENT**
Symmetry **EXCELLENT**
Fluorescence **NONE**
Inscription(s) **IGI LG635464460**

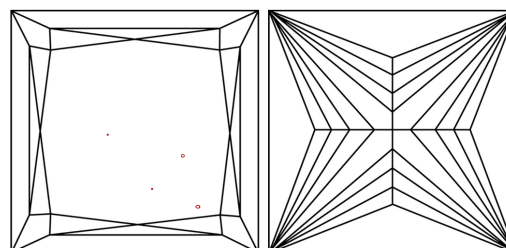
Comments: This Laboratory Grown Diamond was created by Chemical Vapor Deposition (CVD) growth process and may include post-growth treatment. Type IIa

PROPORTIONS



Sample Image Used

CLARITY CHARACTERISTICS



KEY TO SYMBOLS

Red symbols indicate internal characteristics.
Green symbols indicate external characteristics.

COLOR

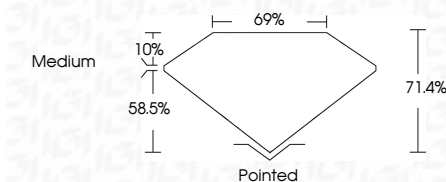
D E F G H I J Faint Very Light Light

CLARITY

IF	VS ¹⁻²	VS ¹⁻²	SI ¹⁻²	I ¹⁻³
Internally Flawless	Very Very Slightly Included	Very Slightly Included	Slightly Included	Included



May 17, 2024
IGI Report Number **LG635464460**
Description **LABORATORY GROWN DIAMOND**
Shape and Cutting Style **PRINCESS CUT**
Measurements **7.04 X 7.03 X 5.02 MM**
GRADING RESULTS
Carat Weight **2.08 CARATS**
Color Grade **G**
Clarity Grade **VS 1**



ADDITIONAL GRADING INFORMATION

Polish **EXCELLENT**
Symmetry **EXCELLENT**
Fluorescence **NONE**
Inscription(s) **IGI LG635464460**
Comments: This Laboratory Grown Diamond was created by Chemical Vapor Deposition (CVD) growth process and may include post-growth treatment. Type IIa



IGI

May 17, 2024
IGI Report No. **LG635464460**
PRINCESS CUT
7.04 X 7.03 X 5.02 MM
Carat Weight **2.08 CARATS**
Color Grade **G**
Clarity Grade **VS 1**
Depth **58.5%**
Table **10%**
Girdle **69%**
Medium
Culet **Pointed**
Polish **EXCELLENT**
Symmetry **EXCELLENT**
Fluorescence **NONE**
Inscription(s) **IGI LG635464460**

Comments: This Laboratory Grown Diamond was created by Chemical Vapor Deposition (CVD) growth process and may include post-growth treatment. Type IIa