



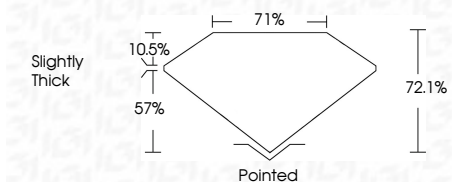
ELECTRONIC COPY

LG635464489 Report verification at igi.org



May 17, 2024 IGI Report Number LG635464489 Description LABORATORY GROWN DIAMOND Shape and Cutting Style PRINCESS CUT Measurements 7.46 X 7.42 X 5.35 MM

GRADING RESULTS Carat Weight 2.52 CARATS Color Grade F Clarity Grade VS 1



ADDITIONAL GRADING INFORMATION Polish EXCELLENT Symmetry EXCELLENT Fluorescence NONE Inscription(s) LG635464489 Comments: This Laboratory Grown Diamond was created by Chemical Vapor Deposition (CVD) growth process and may include post-growth treatment. Type IIa



May 17, 2024 IGI Report No. LG635464489 PRINCESS CUT 7.46 X 7.42 X 5.35 MM 2.52 CARATS F VS 1 72.1% 71% Slightly Thick Pointed EXCELLENT EXCELLENT NONE LG635464489

Comments: This Laboratory Grown Diamond was created by Chemical Vapor Deposition (CVD) growth process and may include post-growth treatment. Type IIa

LABORATORY GROWN DIAMOND REPORT

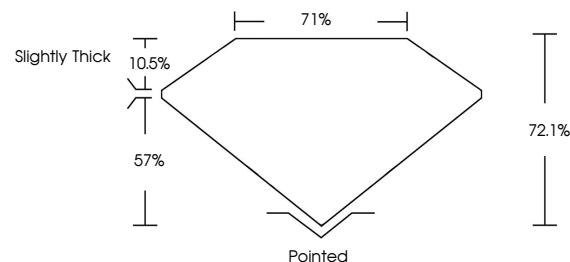
May 17, 2024 IGI Report Number LG635464489 Description LABORATORY GROWN DIAMOND Shape and Cutting Style PRINCESS CUT Measurements 7.46 X 7.42 X 5.35 MM

GRADING RESULTS Carat Weight 2.52 CARATS Color Grade F Clarity Grade VS 1

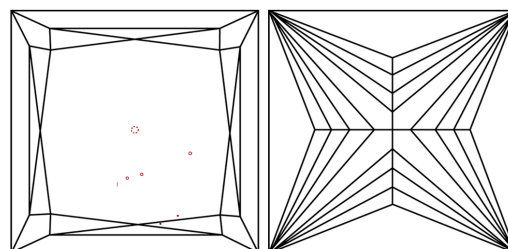
ADDITIONAL GRADING INFORMATION Polish EXCELLENT Symmetry EXCELLENT Fluorescence NONE Inscription(s) LG635464489

Comments: This Laboratory Grown Diamond was created by Chemical Vapor Deposition (CVD) growth process and may include post-growth treatment. Type IIa

PROPORTIONS

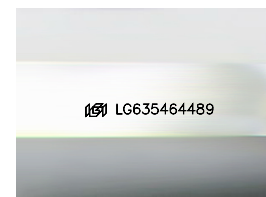


CLARITY CHARACTERISTICS



KEY TO SYMBOLS

Red symbols indicate internal characteristics. Green symbols indicate external characteristics.



Sample Image Used

COLOR

D E F G H I J Faint Very Light Light

CLARITY

IF VS 1-2 VS 1-2 SI 1-2 I 1-3 Internally Flawless Very Very Slightly Included Very Slightly Included Slightly Included Included

