

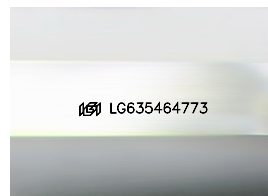
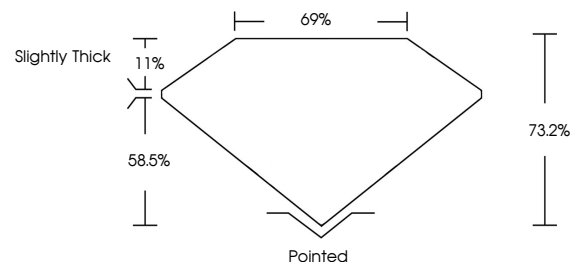


ELECTRONIC COPY

LABORATORY GROWN DIAMOND REPORT

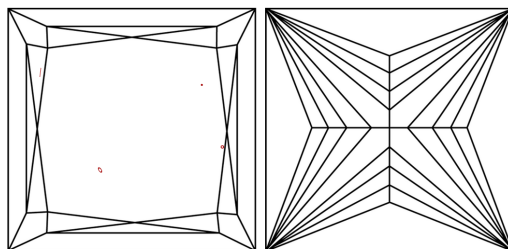
LG635464773
Report verification at lgi.org

PROPORTIONS



Sample Image Used

CLARITY CHARACTERISTICS



KEY TO SYMBOLS

Red symbols indicate internal characteristics.
Green symbols indicate external characteristics.

COLOR

D E F G H I J Faint Very Light Light

CLARITY

IF	WVS ¹⁻²	VS ¹⁻²	SI ¹⁻²	I ¹⁻³
Internally Flawless	Very Very Slightly Included	Very Slightly Included	Slightly Included	Included



© IGI 2020, International Gemological Institute

FD - 10 20

www.igi.org

DIAMOND REPORT



May 17, 2024

IGI Report Number **LG635464773**Description **LABORATORY GROWN DIAMOND**Shape and Cutting Style **PRINCESS CUT**

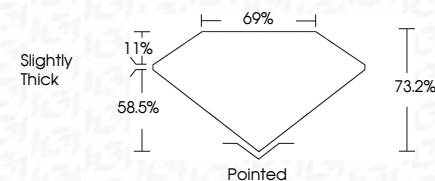
Measurements **7.62 X 7.49 X 5.48 MM**

GRADING RESULTS

Carat Weight **2.80 CARATS**

Color Grade **G**

Clarity Grade VS 1



ADDITIONAL GRADING INFORMATION

Polish **EXCELLENT**Symmetry **EXCELLENT**Fluorescence **NONE**Inscription(s) LG635464773

Comments: This Laboratory Grown Diamond was created by Chemical Vapor Deposition (CVD) growth process and may include post-growth treatment.
Type IIa



IG

May 17, 2024
GI Report No LG635464773
PRINCESS CUT

7.62 X 7.49 X 5.48 MM	2.80 CARATS
Carat Weight	G
Color Grade	VS 1
Clarity Grade	73.2%
Depth	69%
Table	Slightly Thick
Girdle	Pointed
Polish	EXCELLENT
Symmetry	EXCELLENT
Fluorescence	NONE
Report Number(s)	4041 CAS5454773

Comments:
This Laboratory Grown Diamond was created by Chemical Vapor Deposition (CVD) growth process and may include cost-growth treatment.
type IIa