



ELECTRONIC COPY

LG635465498
Report verification at igi.org



May 24, 2024

IGI Report Number **LG635465498**

Description **LABORATORY GROWN DIAMOND**

Shape and Cutting Style **OVAL MODIFIED BRILLIANT**

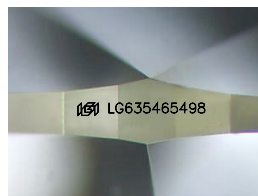
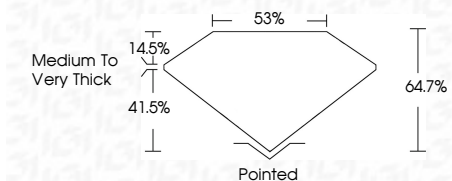
Measurements **9.61 X 6.15 X 3.98 MM**

GRADING RESULTS

Carat Weight **1.67 CARAT**

Color Grade **FANCY INTENSE BLUE**

Clarity Grade **VS 1**



Sample Image Used

ADDITIONAL GRADING INFORMATION

Polish **VERY GOOD**

Symmetry **VERY GOOD**

Fluorescence **NONE**

Inscription(s) **IGI LG635465498**

Comments: This Laboratory Grown Diamond was created by Chemical Vapor Deposition (CVD) growth process. Indications of post-growth treatment.



IGI

May 24, 2024

IGI Report No LG635465498

OVAL MODIFIED BRILLIANT

9.61 X 6.15 X 3.98 MM

1.67 CARAT

FANCY INTENSE BLUE

VS 1

64.7%

85%

Medium to Very Thick

Pointed

Polish

VERY GOOD

Symmetry

VERY GOOD

Fluorescence

NONE

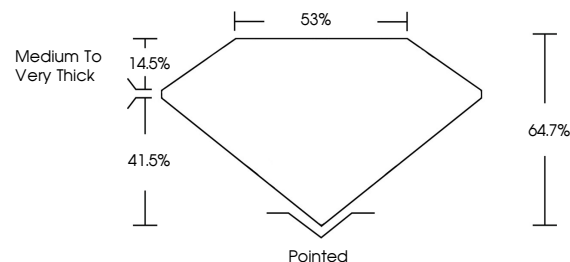
Inscription(s)

IGI LG635465498

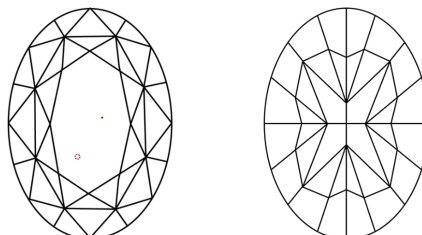
Comments: This Laboratory Grown Diamond was created by Chemical Vapor Deposition (CVD) growth process. Indications of post-growth treatment.



PROPORTIONS



CLARITY CHARACTERISTICS



KEY TO SYMBOLS

Red symbols indicate internal characteristics.
Green symbols indicate external characteristics.

COLOR

D E F G H I J Faint Very Light Light

CLARITY

IF	VS ¹⁻²	VS ¹⁻²	SI ¹⁻²	I ¹⁻³
Internally Flawless	Very Very Slightly Included	Very Slightly Included	Slightly Included	Included