



ELECTRONIC COPY

LG635465547 Report verification at igi.org



May 24, 2024 IGI Report Number LG635465547

Description LABORATORY GROWN DIAMOND

Shape and Cutting Style CUT CORNERED RECTANGULAR MODIFIED BRILLIANT

Measurements 11.37 X 7.42 X 5.21 MM

GRADING RESULTS

Carat Weight 4.16 CARATS

Color Grade FANCY INTENSE BROWNISH PINK

Clarity Grade VS 1

LABORATORY GROWN DIAMOND REPORT

May 24, 2024

IGI Report Number LG635465547

Description LABORATORY GROWN DIAMOND

Shape and Cutting Style CUT CORNERED RECTANGULAR MODIFIED BRILLIANT

Measurements 11.37 X 7.42 X 5.21 MM

GRADING RESULTS

Carat Weight 4.16 CARATS

Color Grade FANCY INTENSE BROWNISH PINK

Clarity Grade VS 1

ADDITIONAL GRADING INFORMATION

Polish EXCELLENT

Symmetry VERY GOOD

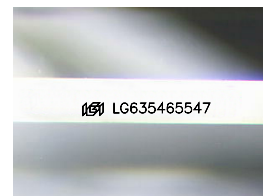
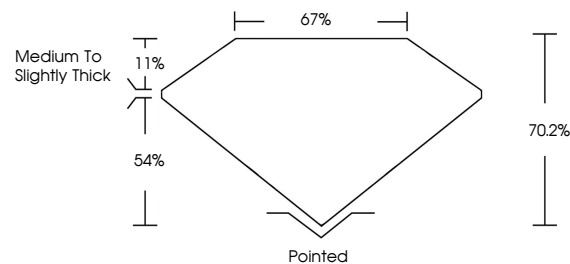
Fluorescence SLIGHT

Inscription(s) LG635465547

Comments: This Laboratory Grown Diamond was created by Chemical Vapor Deposition (CVD) growth process.

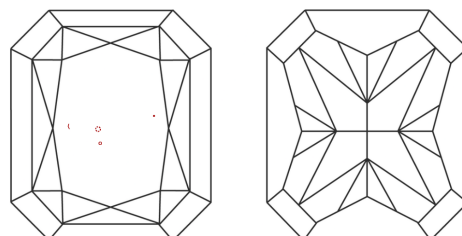
Indications of post-growth treatment.

PROPORTIONS



Sample Image Used

CLARITY CHARACTERISTICS



KEY TO SYMBOLS

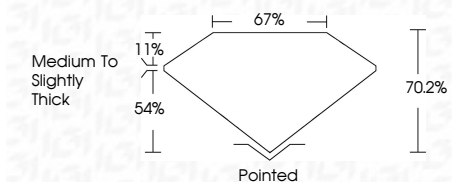
Red symbols indicate internal characteristics. Green symbols indicate external characteristics.

COLOR

D E F G H I J Faint Very Light Light

CLARITY

IF VS 1-2 VS 1-2 SI 1-2 I 1-3 Internally Flawless Very Very Slightly Included Very Slightly Included Slightly Included Included



ADDITIONAL GRADING INFORMATION

Polish EXCELLENT

Symmetry VERY GOOD

Fluorescence SLIGHT

Inscription(s) LG635465547

Comments: This Laboratory Grown Diamond was created by Chemical Vapor Deposition (CVD) growth process. Indications of post-growth treatment.



IGI



May 24, 2024 IGI Report No. LG635465547 CUT CORNERED RECT. MODIFIED BRILLIANT 4.16 CARATS FANCY INTENSE BROWNISH PINK VS 1 11.37 X 7.42 X 5.21 MM Medium to Slightly Thick Polished EXCELLENT VERY GOOD SLIGHT LG635465547 Comments: This Laboratory Grown Diamond was created by Chemical Vapor Deposition (CVD) growth process. Indications of post-growth treatment.