



ELECTRONIC COPY

LABORATORY GROWN DIAMOND REPORT

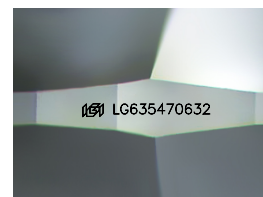
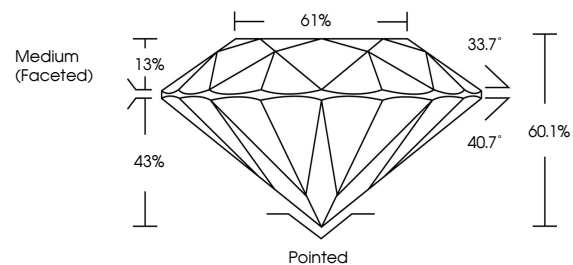
May 17, 2024
IGI Report Number LG635470632
Description LABORATORY GROWN DIAMOND
Shape and Cutting Style ROUND BRILLIANT
Measurements 8.12 - 8.16 X 4.89 MM
GRADING RESULTS
Carat Weight 2.01 CARATS
Color Grade E
Clarity Grade VVS 2
Cut Grade EXCELLENT

ADDITIONAL GRADING INFORMATION

Polish EXCELLENT
Symmetry EXCELLENT
Fluorescence NONE
Inscription(s) IGI LG635470632

Comments: HEARTS & ARROWS
This Laboratory Grown Diamond was created by Chemical Vapor Deposition (CVD) growth process and may include post-growth treatment. Type IIa

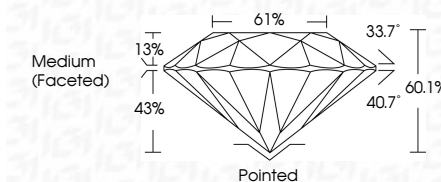
PROPORTIONS



Sample Image Used



May 17, 2024
IGI Report Number LG635470632
Description LABORATORY GROWN DIAMOND
Shape and Cutting Style ROUND BRILLIANT
Measurements 8.12 - 8.16 X 4.89 MM
GRADING RESULTS
Carat Weight 2.01 CARATS
Color Grade E
Clarity Grade VVS 2
Cut Grade EXCELLENT



ADDITIONAL GRADING INFORMATION

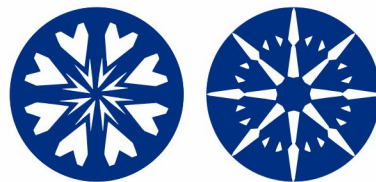
Polish EXCELLENT
Symmetry EXCELLENT
Fluorescence NONE
Inscription(s) IGI LG635470632
Comments: HEARTS & ARROWS
This Laboratory Grown Diamond was created by Chemical Vapor Deposition (CVD) growth process and may include post-growth treatment. Type IIa

COLOR

D E F G H I J Faint Very Light Light

CLARITY

IF VVS 1-2 VS 1-2 SI 1-2 I 1-3
Internally Flawless Very Very Slightly Included Very Slightly Included Slightly Included Included



IGI

May 17, 2024
IGI Report No LG635470632
ROUND BRILLIANT
8.12 - 8.16 X 4.89 MM
2.01 CARATS E
VVS 2 EXCELLENT 60.1% 61%
Medium (Faceted)
Pointed EXCELLENT EXCELLENT NONE
None IGI LG635470632
Comments: HEARTS & ARROWS
This Laboratory Grown Diamond was created by Chemical Vapor Deposition (CVD) growth process and may include post-growth treatment. Type IIa