



**INTERNATIONAL  
GEMOLOGICAL  
INSTITUTE**

**ELECTRONIC COPY**

**LG635481667**



**May 27, 2024**

**IGI Report Number LG635481667**

**ROUND BRILLIANT  
LABORATORY GROWN DIAMOND**

**6.18 - 6.25 X 3.86 MM**

**Carat Weight 0.93 CARAT**

**Color Grade FANCY VIVID BLUE**

**Clarity Grade VS 2**

**Cut Grade EXCELLENT**

**Polish EXCELLENT**

**Symmetry EXCELLENT**

**Fluorescence NONE**

**Inscription(s) IGI LG635481667**

**Comments:** This Laboratory Grown Diamond was created by Chemical Vapor Deposition (CVD) growth process. Indications of post-growth treatment.

**LABORATORY GROWN DIAMOND REPORT**

May 27, 2024

IGI Report Number

**LG635481667**

Description

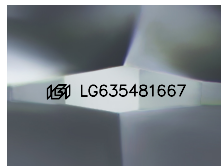
**LABORATORY GROWN DIAMOND**

Shape and Cutting Style

**ROUND BRILLIANT**

Measurements

**6.18 - 6.25 X 3.86 MM**



Sample Image Used

**GRADING RESULTS**

Carat Weight

**0.93 CARAT**

Color Grade

**FANCY VIVID BLUE**

Clarity Grade

**VS 2**

Cut Grade

**EXCELLENT**

**ADDITIONAL GRADING INFORMATION**

Polish

**EXCELLENT**

Symmetry

**EXCELLENT**

Fluorescence

**NONE**

Inscription(s)

**IGI LG635481667**

**Comments:** This Laboratory Grown Diamond was created by Chemical Vapor Deposition (CVD) growth process. Indications of post-growth treatment.



**May 27, 2024**

**IGI Report Number LG635481667**

**ROUND BRILLIANT**

**LABORATORY GROWN DIAMOND**

**6.18 - 6.25 X 3.86 MM**

**Carat Weight 0.93 CARAT**

**Color Grade FANCY VIVID BLUE**

**Clarity Grade VS 2**

**Cut Grade EXCELLENT**

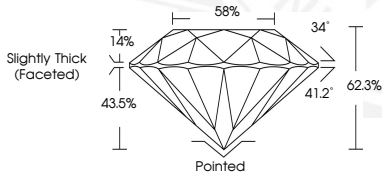
**Polish EXCELLENT**

**Symmetry EXCELLENT**

**Fluorescence NONE**

**Inscription(s) IGI LG635481667**

**Comments:** This Laboratory Grown Diamond was created by Chemical Vapor Deposition (CVD) growth process. Indications of post-growth treatment.



THIS DOCUMENT WAS PRODUCED WITH THE FOLLOWING SECURITY MEASURES: SPECIAL DOCUMENT PAPER, INK SCREENS, WATERMARK, BACKGROUND DESIGN, HOLOGRAM AND OTHER SECURITY FEATURES NOT LISTED AND DO EXCEED DOCUMENT SECURITY INDUSTRY GUIDELINES.

For terms & conditions and to verify this report, please visit [www.igi.org](http://www.igi.org)