



**INTERNATIONAL
GEMOLOGICAL
INSTITUTE**

ELECTRONIC COPY

LG635485728



May 27, 2024

IGI Report Number LG635485728
ROUND BRILLIANT
LABORATORY GROWN DIAMOND
5.93 - 5.97 X 3.69 MM

Carat Weight 0.81 CARAT
Color Grade FANCY INTENSE PINK

Clarity Grade VS 2
Cut Grade IDEAL
Polish EXCELLENT
Symmetry EXCELLENT

Fluorescence SLIGHT
Inscription(s) IGI LG635485728

Comments: This Laboratory Grown Diamond was created by High Pressure High Temperature (HPHT) growth process. Indications of post-growth treatment.

LABORATORY GROWN DIAMOND REPORT

May 27, 2024
IGI Report Number **LG635485728**
Description **LABORATORY GROWN DIAMOND**
Shape and Cutting Style **ROUND BRILLIANT**
Measurements **5.93 - 5.97 X 3.69 MM**

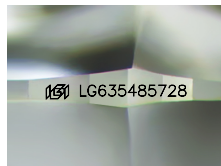
GRADING RESULTS

Carat Weight 0.81 CARAT
Color Grade FANCY INTENSE PINK
Clarity Grade VS 2
Cut Grade IDEAL

ADDITIONAL GRADING INFORMATION

Polish EXCELLENT
Symmetry EXCELLENT
Fluorescence SLIGHT
Inscription(s) IGI LG635485728

Comments: This Laboratory Grown Diamond was created by High Pressure High Temperature (HPHT) growth process. Indications of post-growth treatment.



Sample Image Used



May 27, 2024

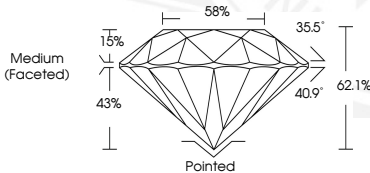
IGI Report Number LG635485728
ROUND BRILLIANT
LABORATORY GROWN DIAMOND
5.93 - 5.97 X 3.69 MM

Carat Weight 0.81 CARAT
Color Grade FANCY INTENSE PINK

Clarity Grade VS 2
Cut Grade IDEAL
Polish EXCELLENT
Symmetry EXCELLENT

Fluorescence SLIGHT
Inscription(s) IGI LG635485728

Comments: This Laboratory Grown Diamond was created by High Pressure High Temperature (HPHT) growth process. Indications of post-growth treatment.



THIS DOCUMENT WAS PRODUCED WITH THE FOLLOWING SECURITY MEASURES: SPECIAL DOCUMENT PAPER, INK SCREENS, WATERMARK, BACKGROUND DESIGNS, HOLOGRAM AND OTHER SECURITY FEATURES NOT LISTED AND DO EXCEED DOCUMENT SECURITY INDUSTRY GUIDELINES.

For terms & conditions and to verify this report, please visit www.igi.org