



**INTERNATIONAL
GEMOLOGICAL
INSTITUTE**

ELECTRONIC COPY

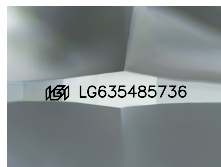
LG635485736



May 27, 2024
IGI Report Number LG635485736
ROUND BRILLIANT
LABORATORY GROWN DIAMOND
5.92 - 5.97 X 3.64 MM
 Carat Weight **0.79 CARAT**
 Color Grade **FANCY PINK**
 Clarity Grade **VS 2**
 Cut Grade **IDEAL**
 Polish **EXCELLENT**
 Symmetry **EXCELLENT**
 Fluorescence **SLIGHT**
 Inscription(s) **IGI LG635485736**

LABORATORY GROWN DIAMOND REPORT

May 27, 2024
 IGI Report Number **LG635485736**
 Description **LABORATORY GROWN DIAMOND**
 Shape and Cutting Style **ROUND BRILLIANT**
 Measurements **5.92 - 5.97 X 3.64 MM**



Sample Image Used

Comments: This Laboratory Grown Diamond was created by High Pressure High Temperature (HPHT) growth process. Indications of post-growth treatment.

GRADING RESULTS

Carat Weight **0.79 CARAT**
 Color Grade **FANCY PINK**
 Clarity Grade **VS 2**
 Cut Grade **IDEAL**

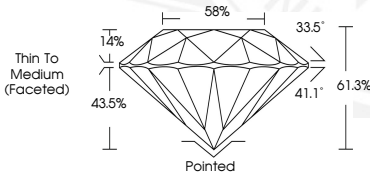
ADDITIONAL GRADING INFORMATION

Polish **EXCELLENT**
 Symmetry **EXCELLENT**
 Fluorescence **SLIGHT**
 Inscription(s) **IGI LG635485736**

Comments: This Laboratory Grown Diamond was created by High Pressure High Temperature (HPHT) growth process. Indications of post-growth treatment.



May 27, 2024
IGI Report Number LG635485736
ROUND BRILLIANT
LABORATORY GROWN DIAMOND
5.92 - 5.97 X 3.64 MM
 Carat Weight **0.79 CARAT**
 Color Grade **FANCY PINK**
 Clarity Grade **VS 2**
 Cut Grade **IDEAL**
 Polish **EXCELLENT**
 Symmetry **EXCELLENT**
 Fluorescence **SLIGHT**
 Inscription(s) **IGI LG635485736**



THIS DOCUMENT WAS PRODUCED WITH THE FOLLOWING SECURITY MEASURES: SPECIAL DOCUMENT PAPER, INK SCREENS, WATERMARK, BACKGROUND DESIGNS, HOLOGRAM AND OTHER SECURITY FEATURES NOT LISTED AND DO EXCEED DOCUMENT SECURITY INDUSTRY GUIDELINES.

For terms & conditions and to verify this report, please visit www.igi.org