



**INTERNATIONAL  
GEMOLOGICAL  
INSTITUTE**

**ELECTRONIC COPY**

**LG635486727**

**LABORATORY GROWN DIAMOND REPORT**

May 17, 2024  
 IGI Report Number **LG635486727**  
 Description **LABORATORY GROWN DIAMOND**  
 Shape and Cutting Style **CUSHION BRILLIANT**  
 Measurements **5.11 X 3.69 X 2.33 MM**

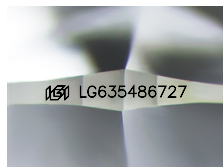
**GRADING RESULTS**

Carat Weight **0.36 CARAT**  
 Color Grade **E**  
 Clarity Grade **VVS 2**

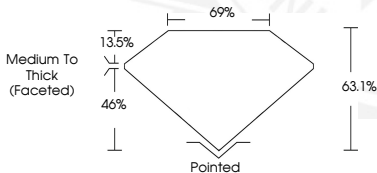
**ADDITIONAL GRADING INFORMATION**

Polish **VERY GOOD**  
 Symmetry **VERY GOOD**  
 Fluorescence **NONE**  
 Inscription(s) **IGI LG635486727**

Comments: This Laboratory Grown Diamond was created by Chemical Vapor Deposition (CVD) growth process and may include post-growth treatment.  
 Type IIa



Sample Image Used



May 17, 2024  
 IGI Report Number **LG635486727**  
**CUSHION BRILLIANT**  
**LABORATORY GROWN DIAMOND**  
**5.11 X 3.69 X 2.33 MM**  
 Carat Weight **0.36 CARAT**  
 Color Grade **E**  
 Clarity Grade **VVS 2**  
 Polish **VERY GOOD**  
 Symmetry **VERY GOOD**  
 Fluorescence **NONE**  
 Inscription(s) **IGI LG635486727**

Comments: This Laboratory Grown Diamond was created by Chemical Vapor Deposition (CVD) growth process and may include post-growth treatment. Type IIa



May 17, 2024  
 IGI Report Number **LG635486727**  
**CUSHION BRILLIANT**  
**LABORATORY GROWN DIAMOND**  
**5.11 X 3.69 X 2.33 MM**  
 Carat Weight **0.36 CARAT**  
 Color Grade **E**  
 Clarity Grade **VVS 2**  
 Polish **VERY GOOD**  
 Symmetry **VERY GOOD**  
 Fluorescence **NONE**  
 Inscription(s) **IGI LG635486727**

Comments: This Laboratory Grown Diamond was created by Chemical Vapor Deposition (CVD) growth process and may include post-growth treatment. Type IIa

THIS DOCUMENT WAS PRODUCED WITH THE FOLLOWING SECURITY MEASURES: SPECIAL DOCUMENT PAPER, INK SCREENS, WATERMARK, BACKGROUND DESIGN, HOLOGRAM AND OTHER SECURITY FEATURES NOT LISTED AND DO EXCEED DOCUMENT SECURITY INDUSTRY GUIDELINES.

For terms & conditions and to verify this report, please visit [www.igi.org](http://www.igi.org)