

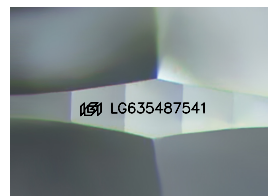
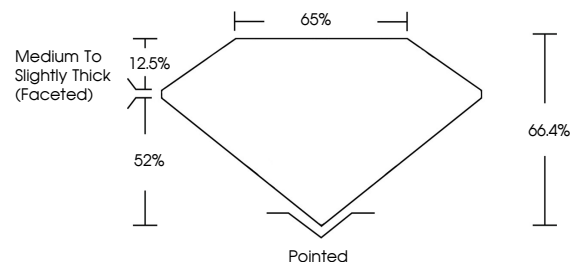


ELECTRONIC COPY

LABORATORY GROWN DIAMOND REPORT

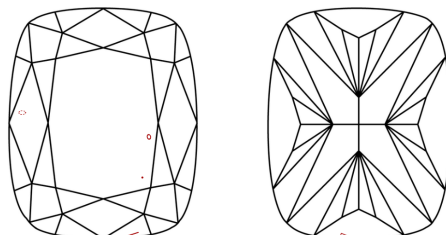
LG635487541
Report verification at lgi.org

PROPORTIONS



Sample Image Used

CLARITY CHARACTERISTICS



KEY TO SYMBOLS

Red symbols indicate internal characteristics.
Green symbols indicate external characteristics.

COLOR

D E F G H I J Faint Very Light Light

CLARITY

IF	WVS ¹⁻²	VS ¹⁻²	SI ¹⁻²	I ¹⁻³
Internally Flawless	Very Very Slightly Included	Very Slightly Included	Slightly Included	Included



© IGI 2020, International Gemological Institute

FD - 10 20

DIAMOND REPORT



May 18, 2024

IGI Report Number **LG635487541**Description **LABORATORY GROWN DIAMOND**Shape and Cutting Style **CUSHION BRILLIANT**

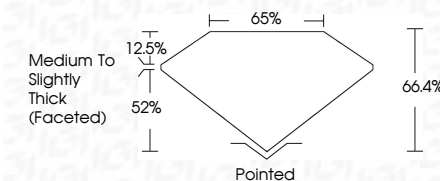
Measurements **8.93 X 6.61 X 4.39 MM**

GRADING RESULTS

Carat Weight **2.01 CARATS**

Color Grade G

Clarity Grade VS 2



ADDITIONAL GRADING INFORMATION

Polish **EXCELLENT**Symmetry **EXCELLENT**Fluorescence **NONE**Inscription(s) LG635487541

Comments: This Laboratory Grown Diamond was created by Chemical Vapor Deposition (CVD) growth process and may include post-growth treatment.
Type IIa



IG

May 18, 2024	GI Report No. LG385487641	
CUSHION BRILLIANT	2.01 CARATS	
Color: Weight	G	
Color Grade	VS2	64.6%
Depth		65%
Table		
Girdle	Medium to Slightly Thick (Faceted)	
Culet	Pointed	
Polish	EXCELLENT	
Symmetry	EXCELLENT	
Fluorescence	NONE	
Inscription(s)	169 LG385487641	

Comments:

The Laboratory Crown Diamond was a CVD growth process and may include post-growth treatment.

Type IIA