



ELECTRONIC COPY

LABORATORY GROWN DIAMOND REPORT

May 20, 2024	
IGI Report Number	LG635488567
Description	LABORATORY GROWN DIAMOND
Shape and Cutting Style	CUT CORNERED RECTANGULAR MODIFIED BRILLIANT
Measurements	7.93 X 5.91 X 4.02 MM

GRADING RESULTS

Carat Weight	1.60 CARAT
Color Grade	E
Clarity Grade	VVS 2

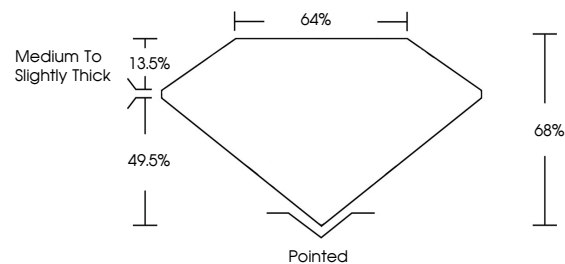
ADDITIONAL GRADING INFORMATION

Polish	EXCELLENT
Symmetry	EXCELLENT
Fluorescence	NONE
Inscription(s)	 LG635488567

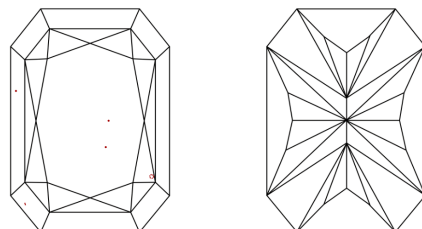
Comments: This Laboratory Grown Diamond was created by Chemical Vapor Deposition (CVD) growth process and may include post-growth treatment.
Type IIa

LG635488567
Report verification at lgi.org

PROPORTIONS

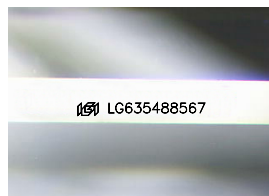


CLARITY CHARACTERISTICS



KEY TO SYMBOLS

Red symbols indicate internal characteristics.
Green symbols indicate external characteristics.



Sample Image Used

COLOR

D E F G H I J Faint Very Light Light

CLARITY

IF	WVS ¹⁻²	VS ¹⁻²	SI ¹⁻²	I ¹⁻³
Internally Flawless	Very Very Slightly Included	Very Slightly Included	Slightly Included	Included



© IGI 2020, International Gemological Institute

FD - 10 20

www.igi.org

DIAMOND REPORT



May 20, 2024

IGI Report Number **LG635488567**Description **LABORATORY GROWN DIAMOND**

Shape and Cutting Style

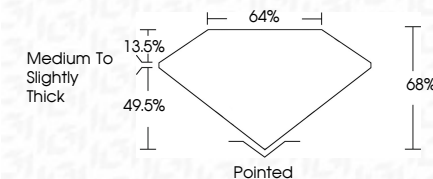
CUT CORNERED
RECTANGULAR MODIFIED
BRILLIANT

Measurements 7.93 X 5.91 X 4.02 MM

GRADING RESULTS

Carat Weight 1.60 CARAT

Color Grade E

Clarity Grade WS 2

ADDITIONAL GRADING INFORMATION

Polish **EXCELLENT**Symmetry **EXCELLENT**Fluorescence **NONE**Inscription(s) LG635488567

Comments: This Laboratory Grown Diamond was created by Chemical Vapor Deposition (CVD) growth process and may include post-growth treatment.
Type IIa



IG

May 20, 2024	GC REPORT NO. LG33548857
CUT CORNBED LOG, MODIFIED BRILLIANT	
1.40 CARAT	WGS 2
	68%
	64%
	Medium To Slightly Thick
	Portined
	EXCELLENT
	EXCELLENT
	NONE
	#6 LG33548857

Comments:

The Laboratory Crown Diamond was a CVD growth process and may include post-growth treatment.

Type Ila