



ELECTRONIC COPY

LABORATORY GROWN DIAMOND REPORT

May 20, 2024  
IGI Report Number LG635488735  
Description LABORATORY GROWN DIAMOND  
Shape and Cutting Style PRINCESS CUT  
Measurements 7.85 X 7.79 X 5.56 MM

GRADING RESULTS

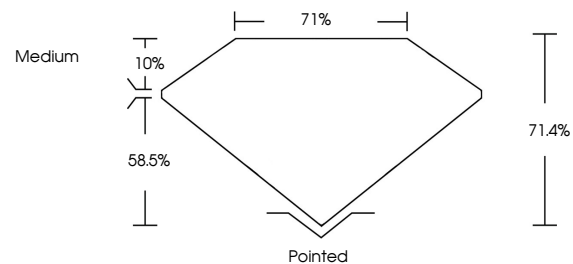
Carat Weight 2.92 CARATS  
Color Grade H  
Clarity Grade VS 1

ADDITIONAL GRADING INFORMATION

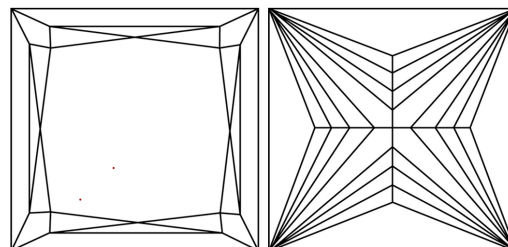
Polish EXCELLENT  
Symmetry EXCELLENT  
Fluorescence NONE  
Inscription(s) IGI LG635488735

Comments: This Laboratory Grown Diamond was created by Chemical Vapor Deposition (CVD) growth process and may include post-growth treatment. Type IIa

PROPORTIONS

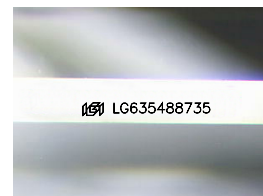


CLARITY CHARACTERISTICS



KEY TO SYMBOLS

Red symbols indicate internal characteristics.  
Green symbols indicate external characteristics.



Sample Image Used

COLOR

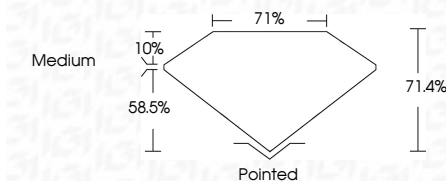
D E F G H I J Faint Very Light Light

CLARITY

IF VS 1-2 VS 1-2 SI 1-2 I 1-3  
Internally Flawless Very Very Slightly Included Very Slightly Included Slightly Included Included



May 20, 2024  
IGI Report Number LG635488735  
Description LABORATORY GROWN DIAMOND  
Shape and Cutting Style PRINCESS CUT  
Measurements 7.85 X 7.79 X 5.56 MM  
GRADING RESULTS  
Carat Weight 2.92 CARATS  
Color Grade H  
Clarity Grade VS 1



ADDITIONAL GRADING INFORMATION

Polish EXCELLENT  
Symmetry EXCELLENT  
Fluorescence NONE  
Inscription(s) IGI LG635488735  
Comments: This Laboratory Grown Diamond was created by Chemical Vapor Deposition (CVD) growth process and may include post-growth treatment. Type IIa



IGI



May 20, 2024  
IGI Report No. LG635488735  
PRINCESS CUT  
2.92 CARATS H  
Carat Weight 7.85 X 7.79 X 5.56 MM  
Color Grade VS 1  
Clarity Grade 71.4%  
Depth 71%  
Table Medium  
Girdle Pointed  
Culet EXCELLENT  
Polish EXCELLENT  
Symmetry EXCELLENT  
Fluorescence NONE  
Inscription(s) IGI LG635488735  
Comments: This Laboratory Grown Diamond was created by Chemical Vapor Deposition (CVD) growth process and may include post-growth treatment. Type IIa