



ELECTRONIC COPY

LG635489759
Report verification at igi.org



May 18, 2024

IGI Report Number **LG635489759**

Description **LABORATORY GROWN DIAMOND**

Shape and Cutting Style **ROUND BRILLIANT**

Measurements **8.15 - 8.18 X 4.97 MM**

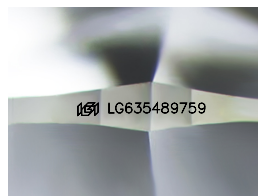
GRADING RESULTS

Carat Weight **2.03 CARATS**

Color Grade **D**

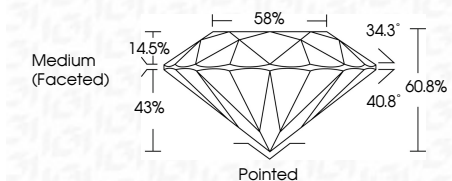
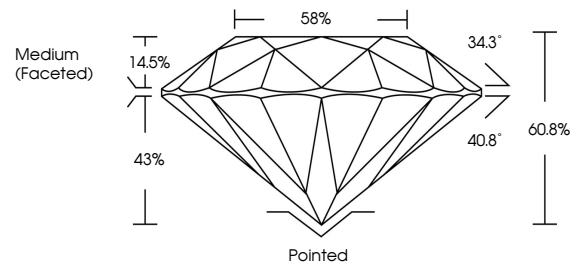
Clarity Grade **VVS 2**

Cut Grade **IDEAL**



Sample Image Used

PROPORTIONS



ADDITIONAL GRADING INFORMATION

Polish **EXCELLENT**

Symmetry **EXCELLENT**

Fluorescence **NONE**

Inscription(s) **IGI LG635489759**

Comments: HEARTS & ARROWS
This Laboratory Grown Diamond was created by Chemical Vapor Deposition (CVD) growth process and may include post-growth treatment.
Type IIa



IGI

May 18, 2024	IGI Report No LG635489759	2.03 CARATS	D
ROUND BRILLIANT	8.15 - 8.18 X 4.97 MM	VVS 2	IDEAL
Carat Weight	Color Grade	Clarity Grade	Cut Grade
2.03	D	VVS 2	IDEAL
Depth	Table	Girdle	Medium (Faceted)
4.97	60.8%	58%	
Culet	Polish	Symmetry	Fluorescence
Pointed	EXCELLENT	EXCELLENT	NONE
Inscription(s)	IGI LG635489759		

Comments: HEARTS & ARROWS
This Laboratory Grown Diamond was created by Chemical Vapor Deposition (CVD) growth process and may include post-growth treatment.
Type IIa

COLOR

D E F G H I J Faint Very Light Light

CLARITY

IF	VVS ¹⁻²	VS ¹⁻²	SI ¹⁻²	I ¹⁻³
Internally Flawless	Very Very Slightly Included	Very Slightly Included	Slightly Included	Included

