



ELECTRONIC COPY

LABORATORY GROWN DIAMOND REPORT

May 25, 2024  
IGI Report Number LG635490208  
Description LABORATORY GROWN DIAMOND  
Shape and Cutting Style SQUARE EMERALD CUT  
Measurements 7.89 X 7.87 X 5.37 MM

GRADING RESULTS

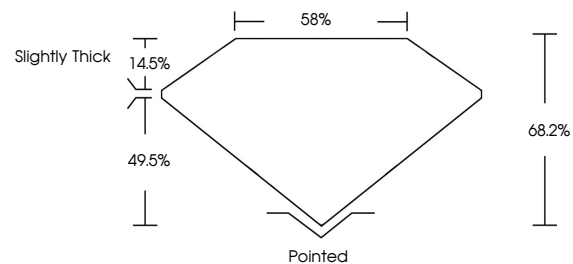
Carat Weight 3.02 CARATS  
Color Grade D  
Clarity Grade VVS 1

ADDITIONAL GRADING INFORMATION

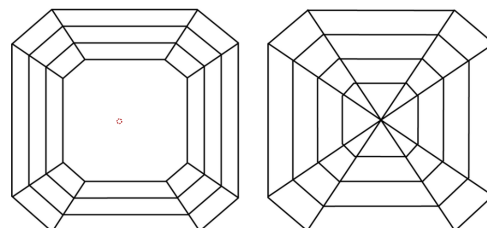
Polish EXCELLENT  
Symmetry EXCELLENT  
Fluorescence NONE  
Inscription(s) IGI LG635490208

Comments: As Grown - No indication of post-growth treatment.  
This Laboratory Grown Diamond was created by High Pressure High Temperature (HPHT) growth process.  
Type II

PROPORTIONS

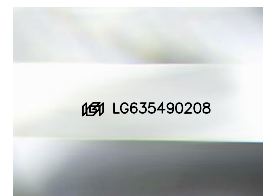


CLARITY CHARACTERISTICS



KEY TO SYMBOLS

Red symbols indicate internal characteristics.  
Green symbols indicate external characteristics.



Sample Image Used

COLOR

D E F G H I J Faint Very Light Light

CLARITY

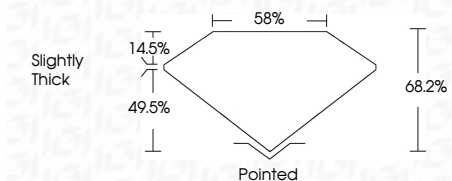
IF VS 1-2 VS 1-2 SI 1-2 I 1-3  
Internally Flawless Very Very Slightly Included Very Slightly Included Slightly Included Included



May 25, 2024  
IGI Report Number LG635490208  
Description LABORATORY GROWN DIAMOND  
Shape and Cutting Style SQUARE EMERALD CUT  
Measurements 7.89 X 7.87 X 5.37 MM

GRADING RESULTS

Carat Weight 3.02 CARATS  
Color Grade D  
Clarity Grade VVS 1



ADDITIONAL GRADING INFORMATION

Polish EXCELLENT  
Symmetry EXCELLENT  
Fluorescence NONE  
Inscription(s) IGI LG635490208  
Comments: As Grown - No indication of post-growth treatment.  
This Laboratory Grown Diamond was created by High Pressure High Temperature (HPHT) growth process.  
Type II



IGI

May 25, 2024  
IGI Report No LG635490208  
SQUARE EMERALD CUT  
3.02 CARATS  
D  
Carat Weight 3.02 CARATS  
Color Grade D  
Clarity Grade VVS 1  
Depth 68.2%  
Table 58%  
Girdle Slightly Thick  
Culet Pointed  
Polish EXCELLENT  
Symmetry EXCELLENT  
Fluorescence NONE  
Inscription(s) IGI LG635490208

Comments: As Grown - No indication of post-growth treatment.  
This Laboratory Grown Diamond was created by High Pressure High Temperature (HPHT) growth process.  
Type II