



ELECTRONIC COPY

LABORATORY GROWN DIAMOND REPORT

May 23, 2024 IGI Report Number LG635493175 Description LABORATORY GROWN DIAMOND Shape and Cutting Style ROUND BRILLIANT Measurements 8.47 - 8.53 X 5.14 MM

GRADING RESULTS

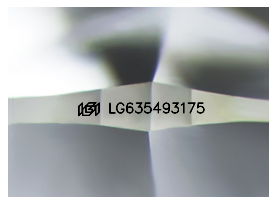
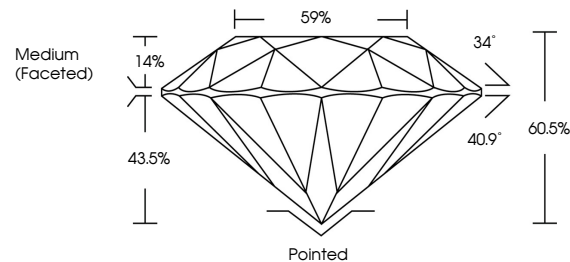
Carat Weight 2.28 CARATS Color Grade F Clarity Grade VVS 1 Cut Grade IDEAL

ADDITIONAL GRADING INFORMATION

Polish EXCELLENT Symmetry EXCELLENT Fluorescence NONE Inscription(s) IGI LG635493175

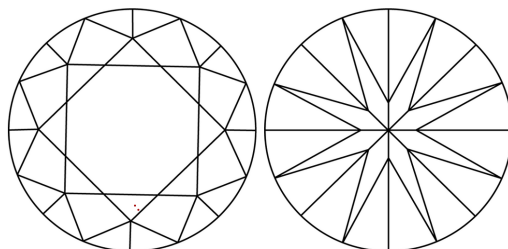
Comments: HEARTS & ARROWS As Grown - No indication of post-growth treatment. This Laboratory Grown Diamond was created by High Pressure High Temperature (HPHT) growth process. Type II

PROPORTIONS



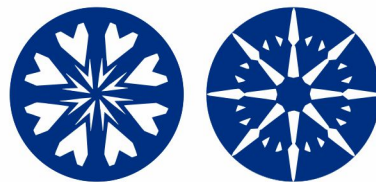
Sample Image Used

CLARITY CHARACTERISTICS



KEY TO SYMBOLS

Red symbols indicate internal characteristics. Green symbols indicate external characteristics.



May 23, 2024 IGI Report Number LG635493175 Description LABORATORY GROWN DIAMOND Shape and Cutting Style ROUND BRILLIANT Measurements 8.47 - 8.53 X 5.14 MM

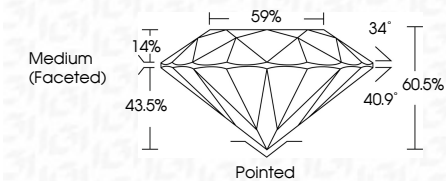
GRADING RESULTS

Carat Weight 2.28 CARATS Color Grade F Clarity Grade VVS 1 Cut Grade IDEAL

ADDITIONAL GRADING INFORMATION

Polish EXCELLENT Symmetry EXCELLENT Fluorescence NONE Inscription(s) IGI LG635493175

Comments: HEARTS & ARROWS As Grown - No indication of post-growth treatment. This Laboratory Grown Diamond was created by High Pressure High Temperature (HPHT) growth process. Type II



COLOR

D E F G H I J Faint Very Light Light

CLARITY

IF VVS 1-2 VS 1-2 SI 1-2 I 1-3 Internally Flawless Very Very Slightly Included Very Slightly Included Slightly Included Included



IGI

May 23, 2024 IGI Report No LG635493175 ROUND BRILLIANT 8.47 - 8.53 X 5.14 MM 2.28 CARATS F VVS 1 IDEAL 60.5% 59% Medium (Faceted) Pointed EXCELLENT EXCELLENT NONE NONE IGI LG635493175 Comments: HEARTS & ARROWS As Grown - No indication of post-growth treatment. This Laboratory Grown Diamond was created by High Pressure High Temperature (HPHT) growth process. Type II