



**ELECTRONIC COPY**

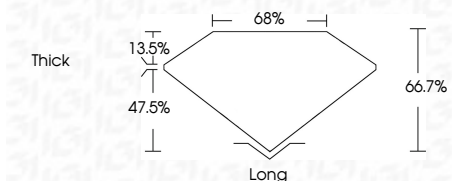
LG635495713  
Report verification at [igi.org](http://igi.org)



May 20, 2024  
IGI Report Number **LG635495713**  
Description **LABORATORY GROWN DIAMOND**  
Shape and Cutting Style **EMERALD CUT**  
Measurements **6.75 X 4.84 X 3.23 MM**

**GRADING RESULTS**

Carat Weight **1.06 CARAT**  
Color Grade **H**  
Clarity Grade **VS 1**



**ADDITIONAL GRADING INFORMATION**

Polish **EXCELLENT**  
Symmetry **VERY GOOD**  
Fluorescence **NONE**  
Inscription(s) **IGI LG635495713**

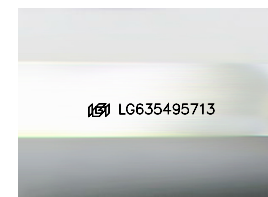
Comments: This Laboratory Grown Diamond was created by Chemical Vapor Deposition (CVD) growth process and may include post-growth treatment. Type IIa



**IGI**

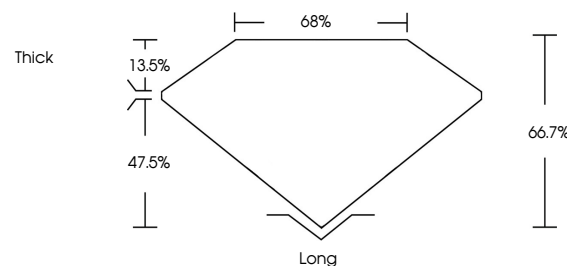
May 20, 2024  
IGI Report No. LG635495713  
**EMERALD CUT**  
6.75 X 4.84 X 3.23 MM  
Carat Weight **1.06 CARAT**  
Color Grade **H**  
Clarity Grade **VS 1**  
Depth **66.7%**  
Table **68%**  
Girdle **Thick**  
Culet **Long**  
Polish **EXCELLENT**  
Symmetry **VERY GOOD**  
Fluorescence **NONE**  
Inscription(s) **IGI LG635495713**

Comments: This Laboratory Grown Diamond was created by Chemical Vapor Deposition (CVD) growth process and may include post-growth treatment. Type IIa



Sample Image Used

**PROPORTIONS**



**COLOR**

D E F G H I J Faint Very Light Light

**CLARITY**

IF	VS <sup>1-2</sup>	VS <sup>1-2</sup>	SI <sup>1-2</sup>	I <sup>1-3</sup>
Internally Flawless	Very Very Slightly Included	Very Slightly Included	Slightly Included	Included



**LABORATORY GROWN DIAMOND REPORT**

May 20, 2024  
IGI Report Number **LG635495713**  
Description **LABORATORY GROWN DIAMOND**  
Shape and Cutting Style **EMERALD CUT**  
Measurements **6.75 X 4.84 X 3.23 MM**  
**GRADING RESULTS**  
Carat Weight **1.06 CARAT**  
Color Grade **H**  
Clarity Grade **VS 1**

**ADDITIONAL GRADING INFORMATION**

Polish **EXCELLENT**  
Symmetry **VERY GOOD**  
Fluorescence **NONE**  
Inscription(s) **IGI LG635495713**

Comments: This Laboratory Grown Diamond was created by Chemical Vapor Deposition (CVD) growth process and may include post-growth treatment. Type IIa