



ELECTRONIC COPY

LABORATORY GROWN DIAMOND REPORT

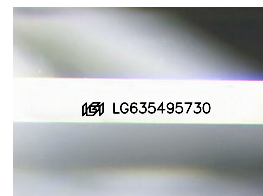
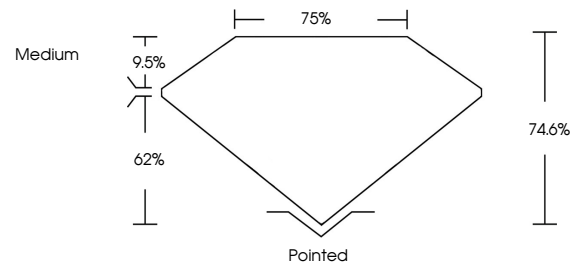
May 20, 2024  
IGI Report Number LG635495730  
Description LABORATORY GROWN DIAMOND  
Shape and Cutting Style PRINCESS CUT  
Measurements 5.65 X 5.47 X 4.08 MM  
**GRADING RESULTS**  
Carat Weight 1.04 CARAT  
Color Grade I  
Clarity Grade VS 1

ADDITIONAL GRADING INFORMATION

Polish VERY GOOD  
Symmetry VERY GOOD  
Fluorescence NONE  
Inscription(s) IGI LG635495730

Comments: This Laboratory Grown Diamond was created by Chemical Vapor Deposition (CVD) growth process and may include post-growth treatment. Type IIa

PROPORTIONS



Sample Image Used

COLOR

D	E	F	G	H	I	J	Faint	Very Light	Light
---	---	---	---	---	---	---	-------	------------	-------

CLARITY

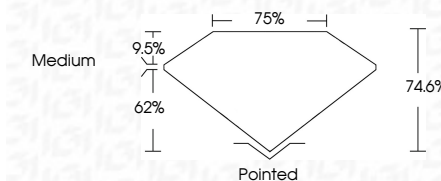
IF	VS 1-2	VS 1-2	SI 1-2	I 1-3
Internally Flawless	Very Very Slightly Included	Very Slightly Included	Slightly Included	Included



May 20, 2024  
IGI Report Number LG635495730  
Description LABORATORY GROWN DIAMOND  
Shape and Cutting Style PRINCESS CUT  
Measurements 5.65 X 5.47 X 4.08 MM  
**GRADING RESULTS**  
Carat Weight 1.04 CARAT  
Color Grade I  
Clarity Grade VS 1

ADDITIONAL GRADING INFORMATION

Polish VERY GOOD  
Symmetry VERY GOOD  
Fluorescence NONE  
Inscription(s) IGI LG635495730  
Comments: This Laboratory Grown Diamond was created by Chemical Vapor Deposition (CVD) growth process and may include post-growth treatment. Type IIa



IGI

May 20, 2024  
IGI Report No. LG635495730  
PRINCESS CUT  
5.65 X 5.47 X 4.08 MM  
1.04 CARAT  
Color Grade I  
Clarity Grade VS 1  
Depth 74.6%  
Table 75%  
Girdle Medium  
Culet Pointed  
Polish VERY GOOD  
Symmetry VERY GOOD  
Fluorescence NONE  
Inscription(s) IGI LG635495730

Comments: This Laboratory Grown Diamond was created by Chemical Vapor Deposition (CVD) growth process and may include post-growth treatment. Type IIa