



**ELECTRONIC COPY**

LG635495737  
Report verification at [igi.org](http://igi.org)

**LABORATORY GROWN DIAMOND REPORT**

May 20, 2024  
IGI Report Number **LG635495737**  
Description **LABORATORY GROWN DIAMOND**  
Shape and Cutting Style **PRINCESS CUT**  
Measurements **5.65 X 5.51 X 4.27 MM**

**GRADING RESULTS**

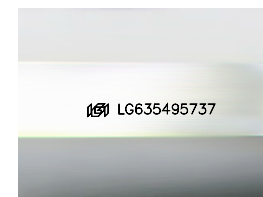
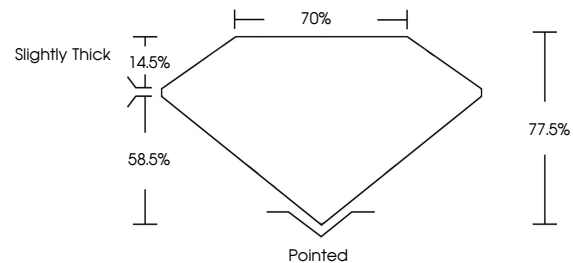
Carat Weight **1.21 CARAT**  
Color Grade **G**  
Clarity Grade **VS 1**

**ADDITIONAL GRADING INFORMATION**

Polish **EXCELLENT**  
Symmetry **VERY GOOD**  
Fluorescence **NONE**  
Inscription(s) **IGI LG635495737**

Comments: This Laboratory Grown Diamond was created by Chemical Vapor Deposition (CVD) growth process and may include post-growth treatment. Type IIa

**PROPORTIONS**



Sample Image Used

**COLOR**

D E F G H I J Faint Very Light Light

**CLARITY**

IF	VS <sup>1-2</sup>	VS <sup>1-2</sup>	SI <sup>1-2</sup>	I <sup>1-3</sup>
Internally Flawless	Very Very Slightly Included	Very Slightly Included	Slightly Included	Included



May 20, 2024  
IGI Report Number **LG635495737**  
Description **LABORATORY GROWN DIAMOND**  
Shape and Cutting Style **PRINCESS CUT**  
Measurements **5.65 X 5.51 X 4.27 MM**

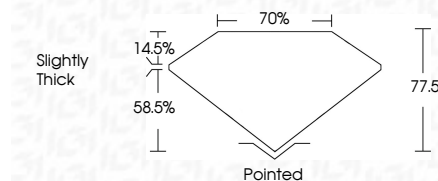
**GRADING RESULTS**

Carat Weight **1.21 CARAT**  
Color Grade **G**  
Clarity Grade **VS 1**

**ADDITIONAL GRADING INFORMATION**

Polish **EXCELLENT**  
Symmetry **VERY GOOD**  
Fluorescence **NONE**  
Inscription(s) **IGI LG635495737**

Comments: This Laboratory Grown Diamond was created by Chemical Vapor Deposition (CVD) growth process and may include post-growth treatment. Type IIa



**IGI**

May 20, 2024  
IGI Report No. LG635495737  
PRINCESS CUT

5.65 X 5.51 X 4.27 MM  
1.21 CARAT  
Color Grade G  
Clarity Grade VS 1  
Table 77.0%  
Depth 70%  
Girdle Slightly Thick  
Culet Pointed  
Polish EXCELLENT  
Symmetry VERY GOOD  
Fluorescence NONE  
Inscription(s) IGI LG635495737

Comments: This Laboratory Grown Diamond was created by Chemical Vapor Deposition (CVD) growth process and may include post-growth treatment. Type IIa