



ELECTRONIC COPY

LABORATORY GROWN DIAMOND REPORT

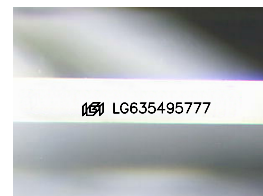
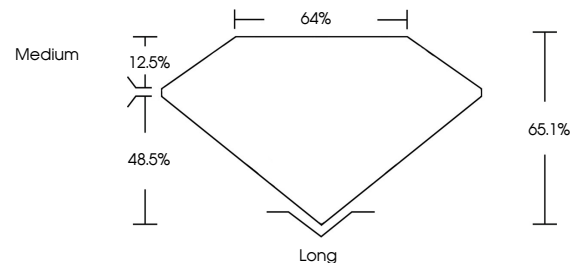
May 20, 2024  
IGI Report Number LG635495777  
Description LABORATORY GROWN DIAMOND  
Shape and Cutting Style EMERALD CUT  
Measurements 6.88 X 4.95 X 3.22 MM  
**GRADING RESULTS**  
Carat Weight 1.05 CARAT  
Color Grade G  
Clarity Grade VS 1

ADDITIONAL GRADING INFORMATION

Polish EXCELLENT  
Symmetry VERY GOOD  
Fluorescence NONE  
Inscription(s) IGI LG635495777

Comments: This Laboratory Grown Diamond was created by Chemical Vapor Deposition (CVD) growth process and may include post-growth treatment. Type IIa

PROPORTIONS



Sample Image Used

COLOR

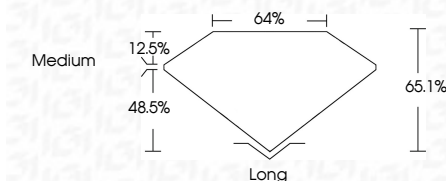
D E F G H I J Faint Very Light Light

CLARITY

IF VS 1-2 VS 1-2 SI 1-2 I 1-3  
Internally Flawless Very Very Slightly Included Very Slightly Included Slightly Included Included



May 20, 2024  
IGI Report Number LG635495777  
Description LABORATORY GROWN DIAMOND  
Shape and Cutting Style EMERALD CUT  
Measurements 6.88 X 4.95 X 3.22 MM  
**GRADING RESULTS**  
Carat Weight 1.05 CARAT  
Color Grade G  
Clarity Grade VS 1



ADDITIONAL GRADING INFORMATION

Polish EXCELLENT  
Symmetry VERY GOOD  
Fluorescence NONE  
Inscription(s) IGI LG635495777

Comments: This Laboratory Grown Diamond was created by Chemical Vapor Deposition (CVD) growth process and may include post-growth treatment. Type IIa



IGI



May 20, 2024  
IGI Report No. LG635495777  
EMERALD CUT  
6.88 X 4.95 X 3.22 MM  
Carat Weight 1.05 CARAT  
Color Grade G  
Clarity Grade VS 1  
Depth 65.1%  
Table 64%  
Girdle Medium  
Culet Long  
Polish EXCELLENT  
Symmetry VERY GOOD  
Fluorescence NONE  
Inscription(s) IGI LG635495777

Comments: This Laboratory Grown Diamond was created by Chemical Vapor Deposition (CVD) growth process and may include post-growth treatment. Type IIa