



**ELECTRONIC COPY**

LG635495782  
Report verification at igi.org



May 20, 2024

IGI Report Number **LG635495782**

Description **LABORATORY GROWN DIAMOND**

Shape and Cutting Style **EMERALD CUT**

Measurements **7.26 X 4.99 X 3.01 MM**

**GRADING RESULTS**

Carat Weight **1.09 CARAT**

Color Grade **H**

Clarity Grade **VS 2**

May 20, 2024

IGI Report Number **LG635495782**

Description **LABORATORY GROWN DIAMOND**

Shape and Cutting Style **EMERALD CUT**

Measurements **7.26 X 4.99 X 3.01 MM**

**GRADING RESULTS**

Carat Weight **1.09 CARAT**

Color Grade **H**

Clarity Grade **VS 2**

**ADDITIONAL GRADING INFORMATION**

Polish **VERY GOOD**

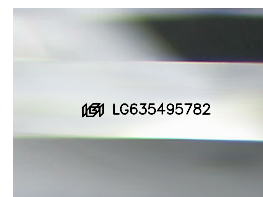
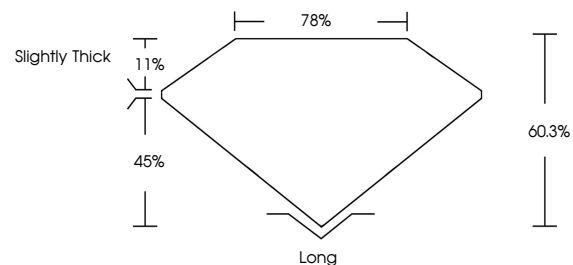
Symmetry **VERY GOOD**

Fluorescence **NONE**

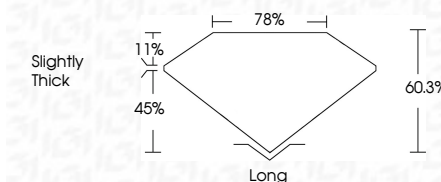
Inscription(s) **IGI LG635495782**

Comments: This Laboratory Grown Diamond was created by Chemical Vapor Deposition (CVD) growth process and may include post-growth treatment. Type IIa

**PROPORTIONS**



Sample Image Used



**ADDITIONAL GRADING INFORMATION**

Polish **VERY GOOD**

Symmetry **VERY GOOD**

Fluorescence **NONE**

Inscription(s) **IGI LG635495782**

Comments: This Laboratory Grown Diamond was created by Chemical Vapor Deposition (CVD) growth process and may include post-growth treatment. Type IIa

**COLOR**

D E F G H I J Faint Very Light Light

**CLARITY**

IF	VS <sup>1-2</sup>	VS <sup>1-2</sup>	SI <sup>1-2</sup>	I <sup>1-3</sup>
Internally Flawless	Very Very Slightly Included	Very Slightly Included	Slightly Included	Included



**IGI**

May 20, 2024  
IGI Report No. LG635495782  
**EMERALD CUT**  
1.09 CARAT H  
7.26 X 4.99 X 3.01 MM  
Color Grade VS 2  
Clarity Grade VS 2  
Table 78%  
Girdle Slightly Thick  
Culet Long  
Polish VERY GOOD  
Symmetry VERY GOOD  
Fluorescence NONE  
Inscription(s) IGI LG635495782

Comments: This Laboratory Grown Diamond was created by Chemical Vapor Deposition (CVD) growth process and may include post-growth treatment. Type IIa