



ELECTRONIC COPY

LABORATORY GROWN DIAMOND REPORT

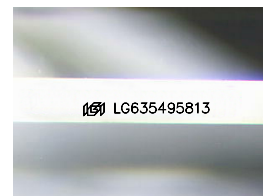
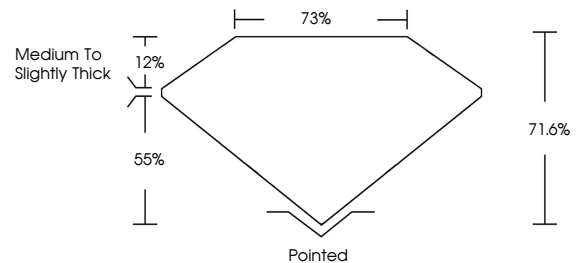
May 20, 2024  
IGI Report Number LG635495813  
Description LABORATORY GROWN DIAMOND  
Shape and Cutting Style PRINCESS CUT  
Measurements 5.44 X 5.45 X 3.90 MM  
**GRADING RESULTS**  
Carat Weight 1.02 CARAT  
Color Grade G  
Clarity Grade VVS 2

ADDITIONAL GRADING INFORMATION

Polish EXCELLENT  
Symmetry VERY GOOD  
Fluorescence NONE  
Inscription(s) IGI LG635495813

Comments: This Laboratory Grown Diamond was created by Chemical Vapor Deposition (CVD) growth process and may include post-growth treatment. Type IIa

PROPORTIONS



Sample Image Used

COLOR

D E F G H I J Faint Very Light Light

CLARITY

IF VS 1-2 VS 1-2 SI 1-2 I 1-3  
Internally Flawless Very Very Slightly Included Very Slightly Included Slightly Included Included

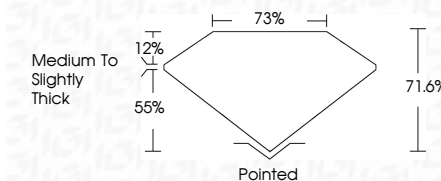


May 20, 2024  
IGI Report Number LG635495813  
Description LABORATORY GROWN DIAMOND  
Shape and Cutting Style PRINCESS CUT  
Measurements 5.44 X 5.45 X 3.90 MM  
**GRADING RESULTS**  
Carat Weight 1.02 CARAT  
Color Grade G  
Clarity Grade VVS 2

ADDITIONAL GRADING INFORMATION

Polish EXCELLENT  
Symmetry VERY GOOD  
Fluorescence NONE  
Inscription(s) IGI LG635495813

Comments: This Laboratory Grown Diamond was created by Chemical Vapor Deposition (CVD) growth process and may include post-growth treatment. Type IIa



IGI

May 20, 2024  
IGI Report No. LG635495813  
PRINCESS CUT  
5.44 X 5.45 X 3.90 MM  
Carat Weight 1.02 CARAT  
Color Grade G  
Clarity Grade VVS 2  
Table 71.6%  
Girdle 75%  
Medium to Slightly Thick  
Culet Pointed  
Polish EXCELLENT  
Symmetry VERY GOOD  
Fluorescence NONE  
Inscription(s) IGI LG635495813

Comments: This Laboratory Grown Diamond was created by Chemical Vapor Deposition (CVD) growth process and may include post-growth treatment. Type IIa