



**ELECTRONIC COPY**

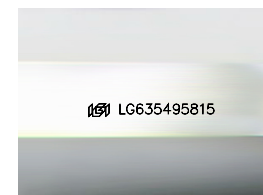
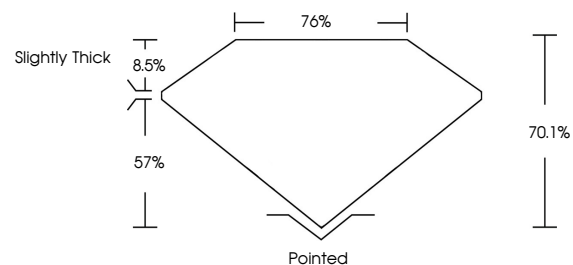
LG635495815  
Report verification at [igi.org](http://igi.org)



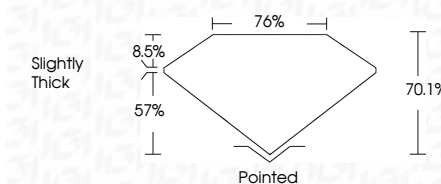
May 20, 2024  
IGI Report Number **LG635495815**  
Description **LABORATORY GROWN DIAMOND**  
Shape and Cutting Style **PRINCESS CUT**  
Measurements **5.68 X 5.52 X 3.87 MM**  
**GRADING RESULTS**  
Carat Weight **1.06 CARAT**  
Color Grade **H**  
Clarity Grade **VVS 2**

May 20, 2024  
IGI Report Number **LG635495815**  
Description **LABORATORY GROWN DIAMOND**  
Shape and Cutting Style **PRINCESS CUT**  
Measurements **5.68 X 5.52 X 3.87 MM**  
**GRADING RESULTS**  
Carat Weight **1.06 CARAT**  
Color Grade **H**  
Clarity Grade **VVS 2**

**PROPORTIONS**



Sample Image Used



**ADDITIONAL GRADING INFORMATION**  
Polish **VERY GOOD**  
Symmetry **VERY GOOD**  
Fluorescence **NONE**  
Inscription(s) **IGI LG635495815**

Comments: This Laboratory Grown Diamond was created by Chemical Vapor Deposition (CVD) growth process and may include post-growth treatment. Type IIa

**ADDITIONAL GRADING INFORMATION**  
Polish **VERY GOOD**  
Symmetry **VERY GOOD**  
Fluorescence **NONE**  
Inscription(s) **IGI LG635495815**  
Comments: This Laboratory Grown Diamond was created by Chemical Vapor Deposition (CVD) growth process and may include post-growth treatment. Type IIa

**COLOR**

D E F G H I J Faint Very Light Light

**CLARITY**

IF	VS <sup>1-2</sup>	VS <sup>1-2</sup>	SI <sup>1-2</sup>	I <sup>1-3</sup>
Internally Flawless	Very Very Slightly Included	Very Slightly Included	Slightly Included	Included



**IGI**

May 20, 2024  
IGI Report No. **LG635495815**  
**PRINCESS CUT**  
**5.68 X 5.52 X 3.87 MM**  
Carat Weight **1.06 CARAT**  
Color Grade **H**  
Clarity Grade **VVS 2**  
Depth **70.1%**  
Table **76%**  
Girdle **Slightly Thick**  
Culet **Pointed**  
Polish **VERY GOOD**  
Symmetry **VERY GOOD**  
Fluorescence **NONE**  
Inscription(s) **IGI LG635495815**

Comments: This Laboratory Grown Diamond was created by Chemical Vapor Deposition (CVD) growth process and may include post-growth treatment. Type IIa