



ELECTRONIC COPY

LG635496180
Report verification at igi.org



May 24, 2024

IGI Report Number LG635496180

Description LABORATORY GROWN DIAMOND

Shape and Cutting Style EMERALD CUT

Measurements 8.06 X 5.43 X 3.62 MM

GRADING RESULTS

Carat Weight 1.61 CARAT

Color Grade E

Clarity Grade VVS 2

LABORATORY GROWN DIAMOND REPORT

May 24, 2024

IGI Report Number LG635496180

Description LABORATORY GROWN DIAMOND

Shape and Cutting Style EMERALD CUT

Measurements 8.06 X 5.43 X 3.62 MM

GRADING RESULTS

Carat Weight 1.61 CARAT

Color Grade E

Clarity Grade VVS 2

ADDITIONAL GRADING INFORMATION

Polish EXCELLENT

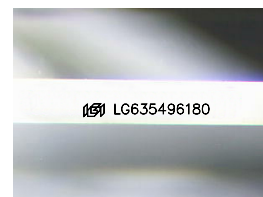
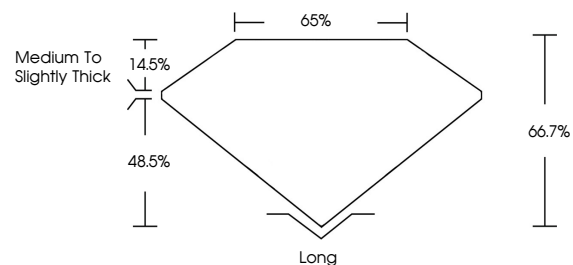
Symmetry EXCELLENT

Fluorescence NONE

Inscription(s) IGI LG635496180

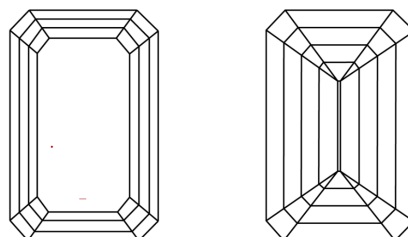
Comments: This Laboratory Grown Diamond was created by Chemical Vapor Deposition (CVD) growth process. Type IIa

PROPORTIONS



Sample Image Used

CLARITY CHARACTERISTICS



KEY TO SYMBOLS

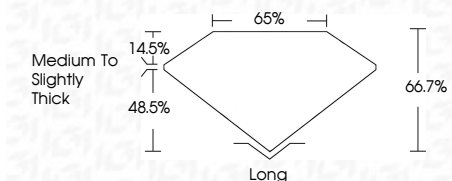
Red symbols indicate internal characteristics. Green symbols indicate external characteristics.

COLOR

D E F G H I J Faint Very Light Light

CLARITY

Table with 5 columns: IF, VS 1-2, VS 1-2, SI 1-2, I 1-3. Rows: Internally Flawless, Very Very Slightly Included, Very Slightly Included, Slightly Included, Included.



ADDITIONAL GRADING INFORMATION

Polish EXCELLENT

Symmetry EXCELLENT

Fluorescence NONE

Inscription(s) IGI LG635496180

Comments: This Laboratory Grown Diamond was created by Chemical Vapor Deposition (CVD) growth process. Type IIa



IGI



May 24, 2024
IGI Report No. LG635496180
EMERALD CUT
8.06 X 5.43 X 3.62 MM
1.61 CARAT
Color Grade E
Clarity Grade VVS 2
Depth 66.7%
Table 65%
Girdle Medium to Slightly Thick
Culet Long
Polish EXCELLENT
Symmetry EXCELLENT
Fluorescence NONE
Inscription(s) IGI LG635496180
Comments: This Laboratory Grown Diamond was created by Chemical Vapor Deposition (CVD) growth process. Type IIa