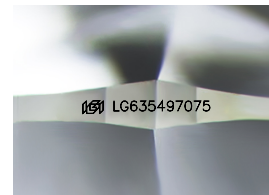
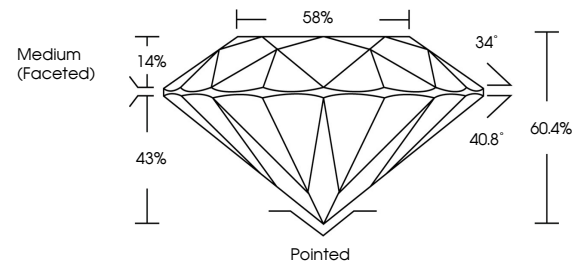


ELECTRONIC COPY

LABORATORY GROWN DIAMOND REPORT

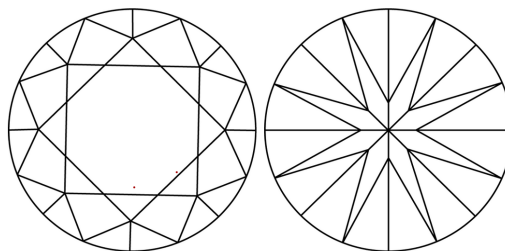
LG635497075
Report verification at igi.org

PROPORTIONS



Sample Image Used

CLARITY CHARACTERISTICS



KEY TO SYMBOLS

Red symbols indicate internal characteristics.
Green symbols indicate external characteristics.

COLOR

D E F G H I J Faint Very Light Light

CLARITY

IF	VVS ¹⁻²	VS ¹⁻²	SI ¹⁻²	I ¹⁻³
Internally Flawless	Very Very Slightly Included	Very Slightly Included	Slightly Included	Included



© IGI 2020, International Gemological Institute

FD - 10 20

www.igi.org

DIAMOND REPORT



May 23, 2024

IGI Report Number **LG635497075**Description **LABORATORY GROWN DIAMOND**Shape and Cutting Style **ROUND BRILLIANT**

Measurements 10.67 - 10.71 X 6.46 MM

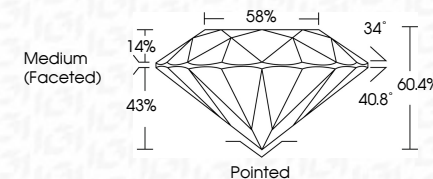
GRADING RESULTS

Carat Weight **4.52 CARATS**

Color Grade G

Clarity Grade WS 1

Cut Grade **IDEAL**



ADDITIONAL GRADING INFORMATION

Polish **EXCELLENT**Symmetry **EXCELLENT**Fluorescence **NONE**Inscription(s)  LG635497075

Comments: This Laboratory Grown Diamond was created by Chemical Vapor Deposition (CVD) growth process and may include post-growth treatment.
Type IIa



	May 28, 2024
	Gf Report No LG9367075
	RING BRILLIANT
	10.07 - 10.71 X 6.46 MM
Cord Weight	4.5Z CARATS
Coor Grade	G
Clarity Grade	VVS 1
Cut Grade	IDeal
Depth	60.4%
Table	58%
Girdle	Medium (Faceted)
Culet	Poished
Polish	EXCELLENT
Symmetry	EXCELLENT
Fluorescence	NONE
Inscriptions(s)	IgG LG9367075
Comments:	The Laboratory Crown Diamond was certified as being a Natural Gemstone. The GVD growth process may include post-growth treatment.
Type IIA	