



ELECTRONIC COPY

LABORATORY GROWN DIAMOND REPORT

May 24, 2024
IGI Report Number LG635499683
Description LABORATORY GROWN DIAMOND
Shape and Cutting Style CUT CORNERED RECTANGULAR MODIFIED BRILLIANT
Measurements 10.36 X 6.97 X 4.58 MM

GRADING RESULTS

Carat Weight 2.93 CARATS
Color Grade F
Clarity Grade VS 2

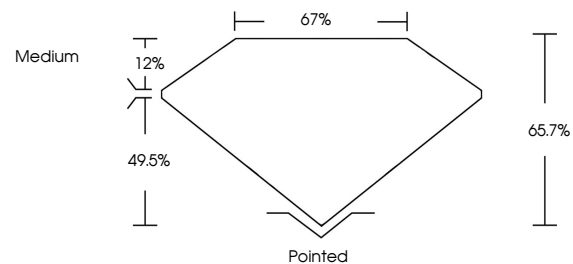
ADDITIONAL GRADING INFORMATION

Polish EXCELLENT
Symmetry EXCELLENT
Fluorescence NONE

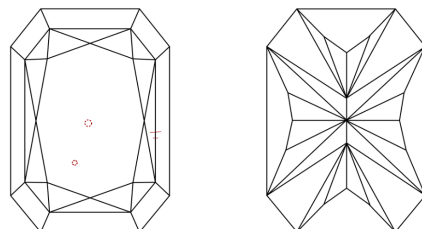
Inscription(s) IGI LG635499683

Comments: This Laboratory Grown Diamond was created by Chemical Vapor Deposition (CVD) growth process and may include post-growth treatment. Type IIa

PROPORTIONS

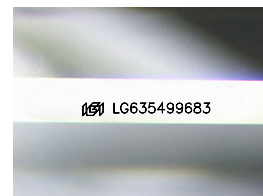


CLARITY CHARACTERISTICS



KEY TO SYMBOLS

Red symbols indicate internal characteristics.
Green symbols indicate external characteristics.



Sample Image Used

COLOR

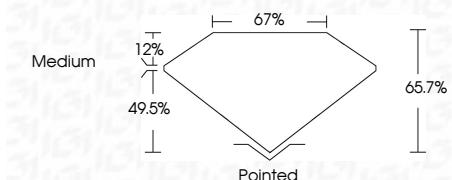
D E F G H I J Faint Very Light Light

CLARITY

Table with columns for clarity grades: IF, VS 1-2, VS 1-2, SI 1-2, I 1-3. Below are descriptions: Internally Flawless, Very Very Slightly Included, Very Slightly Included, Slightly Included, Included.



May 24, 2024
IGI Report Number LG635499683
Description LABORATORY GROWN DIAMOND
Shape and Cutting Style CUT CORNERED RECTANGULAR MODIFIED BRILLIANT
Measurements 10.36 X 6.97 X 4.58 MM
GRADING RESULTS
Carat Weight 2.93 CARATS
Color Grade F
Clarity Grade VS 2



ADDITIONAL GRADING INFORMATION

Polish EXCELLENT
Symmetry EXCELLENT
Fluorescence NONE
Inscription(s) IGI LG635499683

Comments: This Laboratory Grown Diamond was created by Chemical Vapor Deposition (CVD) growth process and may include post-growth treatment. Type IIa



IGI



May 24, 2024
IGI Report No LG635499683
CUT CORNERED RECT. MODIFIED BRILLIANT
2.93 CARATS F
2.93 CARATS F
VS 2 65.7% 67%
Medium
Pointed
EXCELLENT EXCELLENT
NONE
IGI LG635499683

Comments: This Laboratory Grown Diamond was created by Chemical Vapor Deposition (CVD) growth process and may include post-growth treatment. Type IIa