

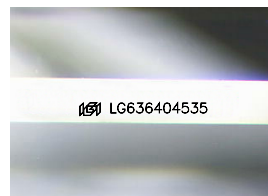
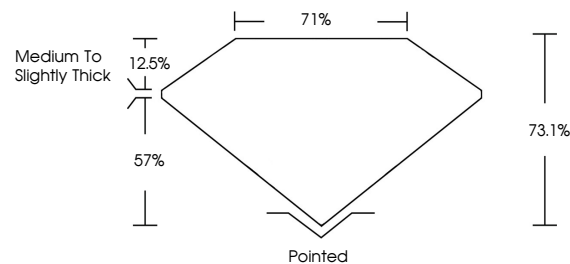


**ELECTRONIC COPY**

## LABORATORY GROWN DIAMOND REPORT

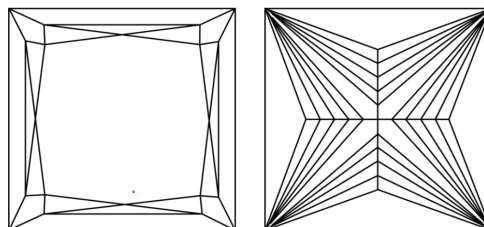
LG636404535  
Report verification at [lgi.org](https://lgi.org)

## PROPORTIONS



Sample Image Used

## CLARITY CHARACTERISTICS



## KEY TO SYMBOLS

Red symbols indicate internal characteristics.  
Green symbols indicate external characteristics.

## COLOR

D E F G H I J Faint Very Light Light

## CLARITY

IF	WVS <sup>1-2</sup>	VS <sup>1-2</sup>	SI <sup>1-2</sup>	I <sup>1-3</sup>
Internally Flawless	Very Very Slightly Included	Very Slightly Included	Slightly Included	Included



© IGI 2020, International Gemological Institute

FD - 10 20

**www.igi.org**

## DIAMOND REPORT



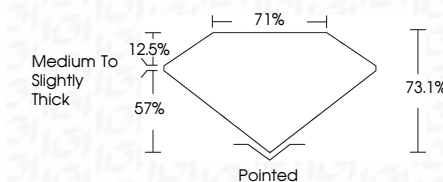
May 29, 2024

IGI Report Number **LG636404535**Description **LABORATORY GROWN DIAMOND**Shape and Cutting Style **PRINCESS CUT**

Measurements 8.62 X 8.52 X 6.23 MM

## GRADING RESULTS

Carat Weight 4.10 CARATS

Color Grade EClarity Grade WS 2

### ADDITIONAL GRADING INFORMATION

Polish **EXCELLENT**Symmetry **EXCELLENT**Fluorescence **NONE**Inscription(s)  LG636404535

Comments: This Laboratory Grown Diamond was created by Chemical Vapor Deposition (CVD) growth process.  
Type IIa



May 29, 2024  
GI Report No LG636404535  
PRINCESS CUT

6.62 X 8.52 X 4.23 MM	Carat Weight	4.10 CARATS
	Color Grade	E
	Clarity Grade	VS 2
	Depth	73.1%
	Table	71%
	Girdle	Medium To Slightly Thick
	Culet	Pointed
	Polish	EXCELLENT
	Symmetry	EXCELLENT
	Fluorescence	NONE
	Comments	Color Catches Well

**Comments:**  
This Laboratory Grown Diamond was created by Chemical Vapor Deposition (CVD) growth process.

THIS DOCUMENT WAS PRODUCED WITH THE FOLLOWING SECURITY MEASURES: SPECIAL DOCUMENT PAPER, INK SCREENS, WATERMARK, BACKGROUND DESIGNS, HOLOGRAM AND OTHER SECURITY FEATURES NOT LISTED AND DO EXCEED DOCUMENT SECURITY INDUSTRY GUIDELINES