



ELECTRONIC COPY

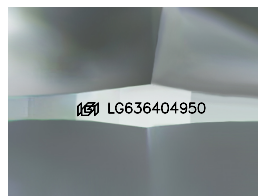
LG636404950
Report verification at igi.org



May 28, 2024
IGI Report Number LG636404950
Description LABORATORY GROWN DIAMOND
Shape and Cutting Style ROUND BRILLIANT
Measurements 8.10 - 8.13 X 4.88 MM

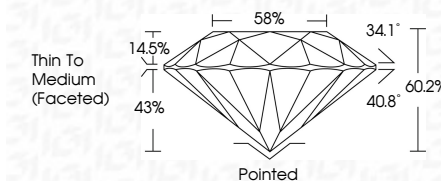
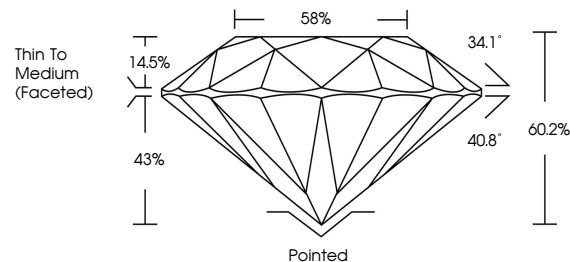
GRADING RESULTS

Carat Weight 1.93 CARAT
Color Grade D
Clarity Grade VS 1
Cut Grade IDEAL



Sample Image Used

PROPORTIONS



ADDITIONAL GRADING INFORMATION

Polish EXCELLENT
Symmetry EXCELLENT
Fluorescence NONE
Inscription(s) LG636404950

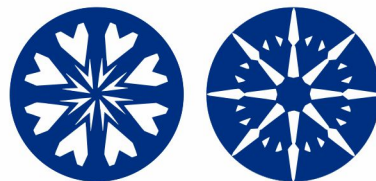
Comments: HEARTS & ARROWS
This Laboratory Grown Diamond was created by Chemical Vapor Deposition (CVD) growth process. Type IIa

COLOR

D E F G H I J Faint Very Light Light

CLARITY

IF VS 1-2 VS 1-2 SI 1-2 I 1-3
Internally Flawless Very Very Slightly Included Very Slightly Included Slightly Included Included



IGI

May 28, 2024
IGI Report No LG636404950
ROUND BRILLIANT
8.10 - 8.13 X 4.88 MM
1.93 CARAT D
VS 1 IDEAL
60.2% 88%
Thin To Medium (Faceted)
Pointed EXCELLENT EXCELLENT NONE
None LG636404950

Comments: HEARTS & ARROWS
This Laboratory Grown Diamond was created by Chemical Vapor Deposition (CVD) growth process. Type IIa