



ELECTRONIC COPY

LG636407679
Report verification at igi.org

LABORATORY GROWN DIAMOND REPORT

May 29, 2024
IGI Report Number **LG636407679**
Description **LABORATORY GROWN DIAMOND**
Shape and Cutting Style **PRINCESS CUT**
Measurements **6.99 X 6.77 X 4.85 MM**

GRADING RESULTS

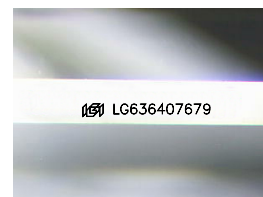
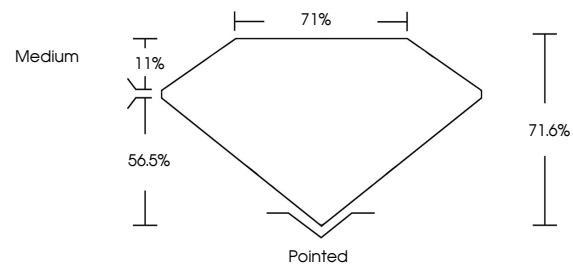
Carat Weight **2.03 CARATS**
Color Grade **F**
Clarity Grade **SI 1**

ADDITIONAL GRADING INFORMATION

Polish **EXCELLENT**
Symmetry **EXCELLENT**
Fluorescence **NONE**
Inscription(s) **IGI LG636407679**

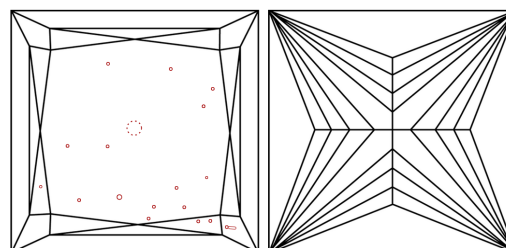
Comments: This Laboratory Grown Diamond was created by Chemical Vapor Deposition (CVD) growth process.
Type IIa

PROPORTIONS



Sample Image Used

CLARITY CHARACTERISTICS



KEY TO SYMBOLS

Red symbols indicate internal characteristics.
Green symbols indicate external characteristics.

COLOR

D E F G H I J Faint Very Light Light

CLARITY

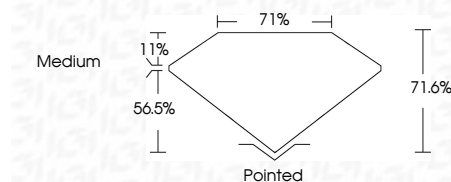
IF	VS ¹⁻²	VS ¹⁻²	SI ¹⁻²	I ¹⁻³
Internally Flawless	Very Very Slightly Included	Very Slightly Included	Slightly Included	Included



May 29, 2024
IGI Report Number **LG636407679**
Description **LABORATORY GROWN DIAMOND**
Shape and Cutting Style **PRINCESS CUT**
Measurements **6.99 X 6.77 X 4.85 MM**

GRADING RESULTS

Carat Weight **2.03 CARATS**
Color Grade **F**
Clarity Grade **SI 1**



ADDITIONAL GRADING INFORMATION

Polish **EXCELLENT**
Symmetry **EXCELLENT**
Fluorescence **NONE**
Inscription(s) **IGI LG636407679**
Comments: This Laboratory Grown Diamond was created by Chemical Vapor Deposition (CVD) growth process.
Type IIa



IGI

May 29, 2024
IGI Report No. **LG636407679**
PRINCESS CUT

2.03 CARATS
Carat Weight
Color Grade **F**
Clarity Grade **SI 1**
Depth **71.6%**
Table **71%**
Girdle **Medium**

Culet **Pointed**
Polish **EXCELLENT**
Symmetry **EXCELLENT**
Fluorescence **NONE**
Inscription(s) **IGI LG636407679**

Comments: This Laboratory Grown Diamond was created by Chemical Vapor Deposition (CVD) growth process.
Type IIa