



ELECTRONIC COPY

LG636408147
Report verification at igi.org



May 29, 2024

IGI Report Number **LG636408147**

Description **LABORATORY GROWN DIAMOND**

Shape and Cutting Style **CUT CORNERED
RECTANGULAR MODIFIED
BRILLIANT**

Measurements **8.24 X 5.62 X 3.71 MM**

GRADING RESULTS

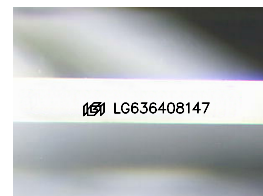
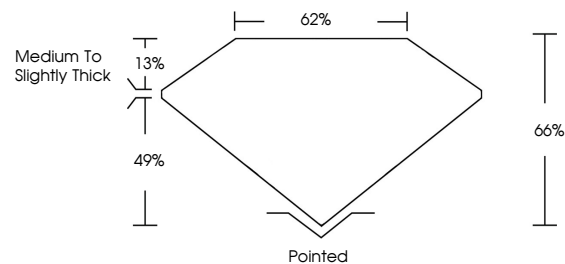
Carat Weight **1.54 CARAT**

Color Grade **D**

Clarity Grade **VS 1**

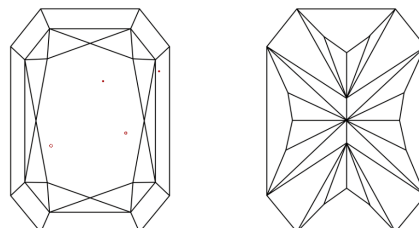
Cut Grade **EXCELLENT**

PROPORTIONS



Sample Image Used

CLARITY CHARACTERISTICS



KEY TO SYMBOLS

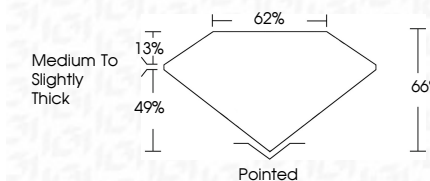
Red symbols indicate internal characteristics.
Green symbols indicate external characteristics.

COLOR

D E F G H I J Faint Very Light Light

CLARITY

IF	VS ¹⁻²	VS ¹⁻²	SI ¹⁻²	I ¹⁻³
Internally Flawless	Very Very Slightly Included	Very Slightly Included	Slightly Included	Included



ADDITIONAL GRADING INFORMATION

Polish **EXCELLENT**

Symmetry **EXCELLENT**

Fluorescence **NONE**

Inscription(s) **IGI LG636408147**

Comments: This Laboratory Grown Diamond was created by Chemical Vapor Deposition (CVD) growth process. Type IIa



IGI



May 29, 2024
IGI Report No. LG636408147
CUT CORNERED RECT. MODIFIED BRILLIANT
8.24 X 5.62 X 3.71 MM
Carat Weight 1.54 CARAT
Color Grade D
Clarity Grade VS 1
Cut Grade EXCELLENT
Depth 65%
Table 62%
Girdle Medium To Slightly Thick
Culet Pointed
Polish EXCELLENT
Symmetry EXCELLENT
Fluorescence NONE
Inscription(s) IGI LG636408147
Comments: This Laboratory Grown Diamond was created by Chemical Vapor Deposition (CVD) growth process. Type IIa