



**INTERNATIONAL  
GEMOLOGICAL  
INSTITUTE**

**ELECTRONIC COPY**

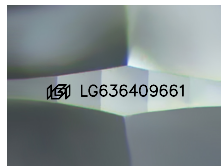
**LG636409661**



**May 28, 2024**  
**IGI Report Number LG636409661**  
**ROUND BRILLIANT**  
**LABORATORY GROWN DIAMOND**  
**6.43 - 6.45 X 3.83 MM**  
 Carat Weight **0.96 CARAT**  
 Color Grade **F**  
 Clarity Grade **VS 1**  
 Cut Grade **IDEAL**  
 Polish **EXCELLENT**  
 Symmetry **EXCELLENT**  
 Fluorescence **NONE**  
 Inscription(s) **IGI LG636409661**

**LABORATORY GROWN DIAMOND REPORT**

**May 28, 2024**  
**IGI Report Number LG636409661**  
**Description LABORATORY GROWN DIAMOND**  
**Shape and Cutting Style ROUND BRILLIANT**  
**Measurements 6.43 - 6.45 X 3.83 MM**



Sample Image Used

**Comments:** This Laboratory Grown Diamond was created by Chemical Vapor Deposition (CVD) growth process. Type IIa

**GRADING RESULTS**

**Carat Weight 0.96 CARAT**  
**Color Grade F**  
**Clarity Grade VS 1**  
**Cut Grade IDEAL**

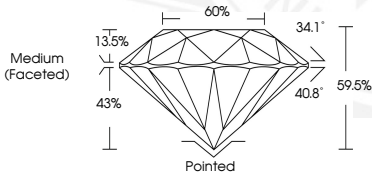
**ADDITIONAL GRADING INFORMATION**

**Polish EXCELLENT**  
**Symmetry EXCELLENT**  
**Fluorescence NONE**  
**Inscription(s) IGI LG636409661**

**Comments:** This Laboratory Grown Diamond was created by Chemical Vapor Deposition (CVD) growth process. Type IIa



**May 28, 2024**  
**IGI Report Number LG636409661**  
**ROUND BRILLIANT**  
**LABORATORY GROWN DIAMOND**  
**6.43 - 6.45 X 3.83 MM**  
 Carat Weight **0.96 CARAT**  
 Color Grade **F**  
 Clarity Grade **VS 1**  
 Cut Grade **IDEAL**  
 Polish **EXCELLENT**  
 Symmetry **EXCELLENT**  
 Fluorescence **NONE**  
 Inscription(s) **IGI LG636409661**



THIS DOCUMENT WAS PRODUCED WITH THE FOLLOWING SECURITY MEASURES: SPECIAL DOCUMENT PAPER, INK SCREENS, WATERMARK, BACKGROUND DESIGN, HOLOGRAM AND OTHER SECURITY FEATURES NOT LISTED AND DO EXCEED DOCUMENT SECURITY INDUSTRY GUIDELINES.

For terms & conditions and to verify this report, please visit [www.igi.org](http://www.igi.org)