



ELECTRONIC COPY

LG636416785
Report verification at igi.org

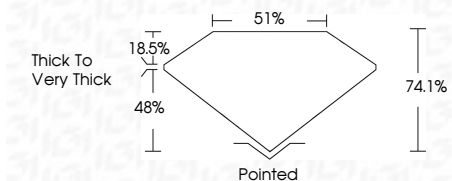


June 5, 2024
IGI Report Number LG636416785
Description LABORATORY GROWN DIAMOND
Shape and Cutting Style CUT CORNERED RECTANGULAR MODIFIED BRILLIANT

Measurements 7.73 X 5.21 X 3.86 MM

GRADING RESULTS

Carat Weight 1.47 CARAT
Color Grade FANCY VIVID PINK
Clarity Grade VVS 2



ADDITIONAL GRADING INFORMATION

Polish EXCELLENT
Symmetry EXCELLENT
Fluorescence SLIGHT
Inscription(s) LG636416785

Comments: This Laboratory Grown Diamond was created by Chemical Vapor Deposition (CVD) growth process. Indications of post-growth treatment.



June 5, 2024
IGI Report No. LG636416785
CUT CORNERED RECT. MODIFIED BRILLIANT
1.47 CARAT
FANCY VIVID PINK
VVS 2
74.1%
51%
Thick to Very Thick
Pointed
EXCELLENT
EXCELLENT
SLIGHT
LG636416785

Comments: This Laboratory Grown Diamond was created by Chemical Vapor Deposition (CVD) growth process. Indications of post-growth treatment.

LABORATORY GROWN DIAMOND REPORT

June 5, 2024
IGI Report Number LG636416785
Description LABORATORY GROWN DIAMOND
Shape and Cutting Style CUT CORNERED RECTANGULAR MODIFIED BRILLIANT
Measurements 7.73 X 5.21 X 3.86 MM

GRADING RESULTS

Carat Weight 1.47 CARAT
Color Grade FANCY VIVID PINK
Clarity Grade VVS 2

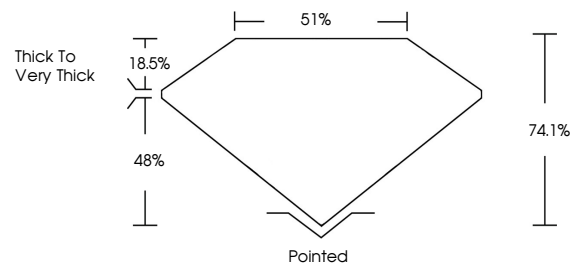
ADDITIONAL GRADING INFORMATION

Polish EXCELLENT
Symmetry EXCELLENT
Fluorescence SLIGHT

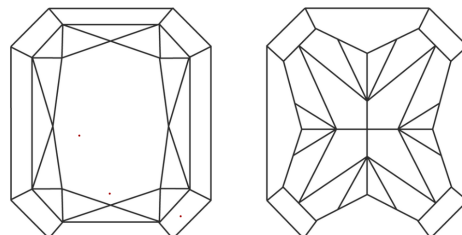
Inscription(s) LG636416785

Comments: This Laboratory Grown Diamond was created by Chemical Vapor Deposition (CVD) growth process. Indications of post-growth treatment.

PROPORTIONS

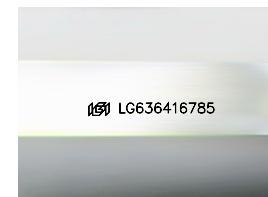


CLARITY CHARACTERISTICS



KEY TO SYMBOLS

Red symbols indicate internal characteristics.
Green symbols indicate external characteristics.



Sample Image Used

COLOR

D E F G H I J Faint Very Light Light

CLARITY

IF VVS 1-2 VS 1-2 SI 1-2 I 1-3
Internally Flawless Very Very Slightly Included Very Slightly Included Slightly Included Included