



ELECTRONIC COPY

LG636418521
Report verification at igi.org



June 6, 2024

IGI Report Number **LG636418521**

Description **LABORATORY GROWN DIAMOND**

Shape and Cutting Style **ROUND BRILLIANT**

Measurements **9.58 - 9.67 X 6.05 MM**

GRADING RESULTS

Carat Weight **3.51 CARATS**

Color Grade **FANCY VIVID YELLOW**

Clarity Grade **VVS 2**

Cut Grade **EXCELLENT**

June 6, 2024

IGI Report Number **LG636418521**

Description **LABORATORY GROWN DIAMOND**

Shape and Cutting Style **ROUND BRILLIANT**

Measurements **9.58 - 9.67 X 6.05 MM**

GRADING RESULTS

Carat Weight **3.51 CARATS**

Color Grade **FANCY VIVID YELLOW**

Clarity Grade **VVS 2**

Cut Grade **EXCELLENT**

ADDITIONAL GRADING INFORMATION

Polish **EXCELLENT**

Symmetry **EXCELLENT**

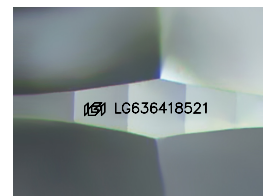
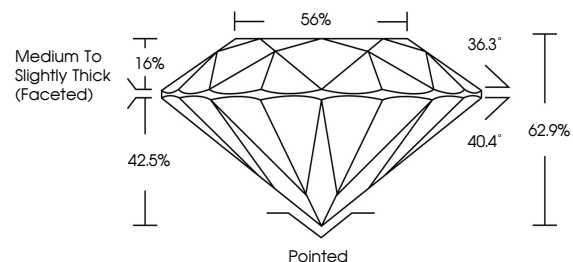
Fluorescence **NONE**

Inscription(s) **IGI LG636418521**

Comments: As Grown - No indication of post-growth treatment.

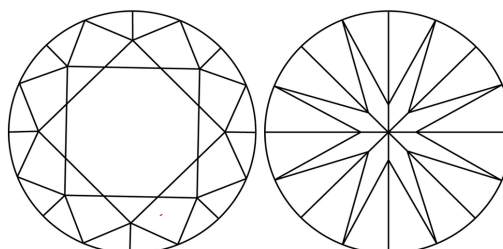
This Laboratory Grown Diamond was created by High Pressure High Temperature (HPHT) growth process.

PROPORTIONS



Sample Image Used

CLARITY CHARACTERISTICS



KEY TO SYMBOLS

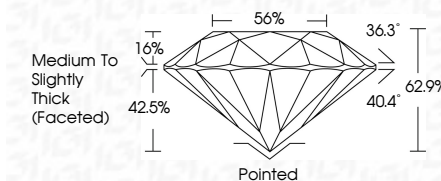
Red symbols indicate internal characteristics.
Green symbols indicate external characteristics.

COLOR

D E F G H I J Faint Very Light Light

CLARITY

IF	VS ¹⁻²	VS ¹⁻²	SI ¹⁻²	I ¹⁻³
Internally Flawless	Very Very Slightly Included	Very Slightly Included	Slightly Included	Included



ADDITIONAL GRADING INFORMATION

Polish **EXCELLENT**

Symmetry **EXCELLENT**

Fluorescence **NONE**

Inscription(s) **IGI LG636418521**

Comments: As Grown - No indication of post-growth treatment.

This Laboratory Grown Diamond was created by High Pressure High Temperature (HPHT) growth process.



IGI



June 6, 2024
IGI Report No LG636418521
ROUND BRILLIANT

3.51 CARATS
Carat Weight
FANCY VIVID YELLOW
Color Grade
VVS 2
Clarity Grade
EXCELLENT
Depth 62.5%
Table 56%
Girdle
Medium To Slightly Thick (Faceted)
Pointed
Polish EXCELLENT
Symmetry EXCELLENT
Fluorescence NONE
Inscriptions(s) IGI LG636418521

Comments: As Grown - No indication of post-growth treatment.
This Laboratory Grown Diamond was created by High Pressure High Temperature (HPHT) growth process.