



ELECTRONIC COPY

LG636418525
Report verification at igi.org



June 6, 2024
IGI Report Number LG636418525
Description LABORATORY GROWN DIAMOND
Shape and Cutting Style CUT CORNERED RECTANGULAR MODIFIED BRILLIANT
Measurements 8.41 X 6.16 X 4.19 MM
GRADING RESULTS
Carat Weight 2.01 CARATS
Color Grade FANCY VIVID PINK
Clarity Grade VS 2

LABORATORY GROWN DIAMOND REPORT

June 6, 2024
IGI Report Number LG636418525
Description LABORATORY GROWN DIAMOND
Shape and Cutting Style CUT CORNERED RECTANGULAR MODIFIED BRILLIANT
Measurements 8.41 X 6.16 X 4.19 MM

GRADING RESULTS

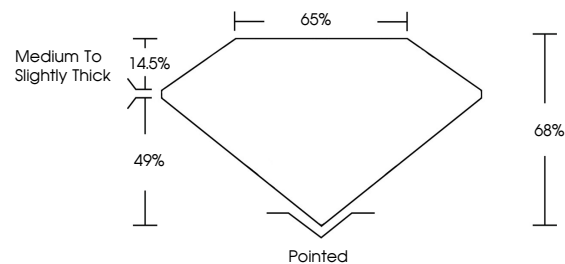
Carat Weight 2.01 CARATS
Color Grade FANCY VIVID PINK
Clarity Grade VS 2

ADDITIONAL GRADING INFORMATION

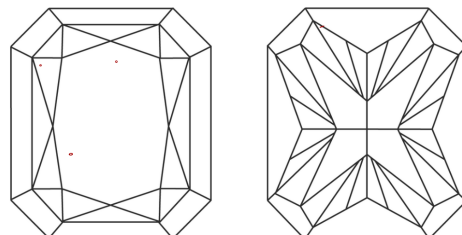
Polish VERY GOOD
Symmetry VERY GOOD
Fluorescence SLIGHT
Inscription(s) LG636418525

Comments: This Laboratory Grown Diamond was created by Chemical Vapor Deposition (CVD) growth process.
Indications of post-growth treatment.

PROPORTIONS

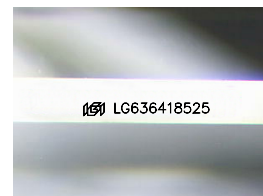


CLARITY CHARACTERISTICS



KEY TO SYMBOLS

Red symbols indicate internal characteristics.
Green symbols indicate external characteristics.



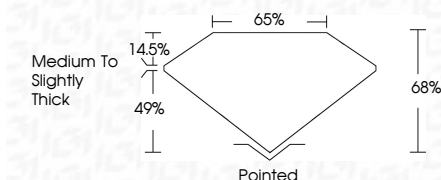
Sample Image Used

COLOR

D E F G H I J Faint Very Light Light

CLARITY

IF VS 1-2 VS 1-2 SI 1-2 I 1-3
Internally Flawless Very Very Slightly Included Very Slightly Included Slightly Included Included



ADDITIONAL GRADING INFORMATION

Polish VERY GOOD
Symmetry VERY GOOD
Fluorescence SLIGHT
Inscription(s) LG636418525
Comments: This Laboratory Grown Diamond was created by Chemical Vapor Deposition (CVD) growth process.
Indications of post-growth treatment.



IGI



June 6, 2024
IGI Report No LG636418525
CUT CORNERED RECT. MODIFIED BRILLIANT
8.41 X 6.16 X 4.19 MM
2.01 CARATS
FANCY VIVID PINK
VS 2
68%
65%
Medium to Slightly Thick
Pointed
Polish VERY GOOD
Symmetry VERY GOOD
Fluorescence SLIGHT
Inscription(s) LG636418525
Comments: This Laboratory Grown Diamond was created by Chemical Vapor Deposition (CVD) growth process.
Indications of post-growth treatment.