



ELECTRONIC COPY

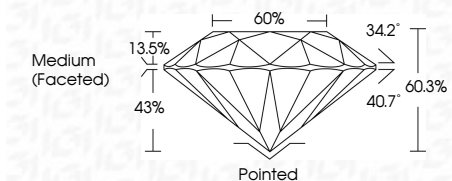
LG636419439
Report verification at igi.org



May 31, 2024
IGI Report Number LG636419439
Description LABORATORY GROWN DIAMOND
Shape and Cutting Style ROUND BRILLIANT
Measurements 8.22 - 8.26 X 4.97 MM

GRADING RESULTS

Carat Weight 2.09 CARATS
Color Grade G
Clarity Grade VVS 2
Cut Grade IDEAL



ADDITIONAL GRADING INFORMATION

Polish EXCELLENT
Symmetry EXCELLENT
Fluorescence NONE
Inscription(s) IGI LG636419439
Comments: This Laboratory Grown Diamond was created by Chemical Vapor Deposition (CVD) growth process. Type IIa



Table with 2 columns: Property and Value. Includes Carat Weight (2.09 CARATS), Color Grade (G), Clarity Grade (VVS 2), Depth (60.3%), Table (65%), Girdle (Medium (Faceted)), Cut (Pointed), Polish (EXCELLENT), Symmetry (EXCELLENT), Fluorescence (NONE), and Inscription(s) (IGI LG636419439).

LABORATORY GROWN DIAMOND REPORT

May 31, 2024
IGI Report Number LG636419439
Description LABORATORY GROWN DIAMOND
Shape and Cutting Style ROUND BRILLIANT
Measurements 8.22 - 8.26 X 4.97 MM

GRADING RESULTS

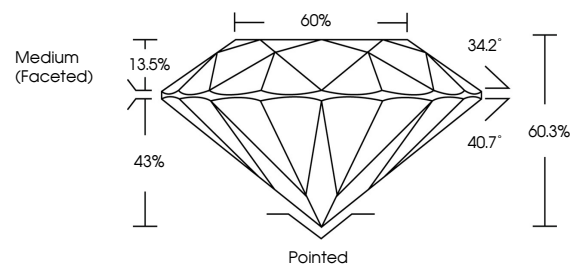
Carat Weight 2.09 CARATS
Color Grade G
Clarity Grade VVS 2
Cut Grade IDEAL

ADDITIONAL GRADING INFORMATION

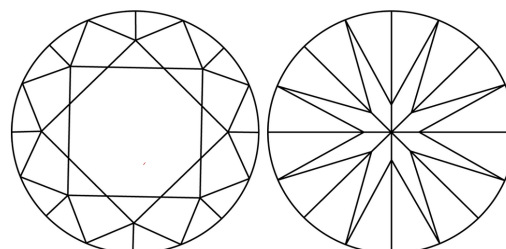
Polish EXCELLENT
Symmetry EXCELLENT
Fluorescence NONE
Inscription(s) IGI LG636419439

Comments: This Laboratory Grown Diamond was created by Chemical Vapor Deposition (CVD) growth process. Type IIa

PROPORTIONS

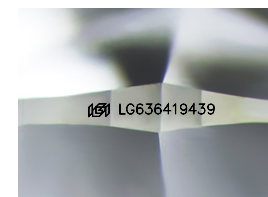


CLARITY CHARACTERISTICS



KEY TO SYMBOLS

Red symbols indicate internal characteristics.
Green symbols indicate external characteristics.



Sample Image Used

COLOR

D E F G H I J Faint Very Light Light

CLARITY

Table with 5 columns: IF, VS 1-2, VS 1-2, SI 1-2, I 1-3. Internally Flawless, Very Very Slightly Included, Very Slightly Included, Slightly Included, Included



Table with 2 columns: Property and Value. Includes Round Brilliant, Carat Weight (2.09 CARATS), Color Grade (G), Clarity Grade (VVS 2), Cut Grade (IDEAL), Depth (60.3%), Table (65%), Girdle (Medium (Faceted)), Cut (Pointed), Polish (EXCELLENT), Symmetry (EXCELLENT), Fluorescence (NONE), and Inscription(s) (IGI LG636419439).