



ELECTRONIC COPY

LG636419861 Report verification at igi.org



June 5, 2024
IGI Report Number LG636419861
Description LABORATORY GROWN DIAMOND
Shape and Cutting Style ROUND BRILLIANT
Measurements 9.13 - 9.16 X 5.65 MM
GRADING RESULTS
Carat Weight 2.92 CARATS
Color Grade G
Clarity Grade INTERNALLY FLAWLESS
Cut Grade IDEAL

June 5, 2024
IGI Report Number LG636419861
Description LABORATORY GROWN DIAMOND
Shape and Cutting Style ROUND BRILLIANT
Measurements 9.13 - 9.16 X 5.65 MM

GRADING RESULTS

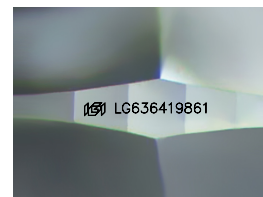
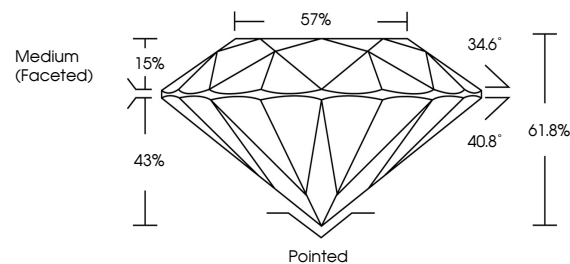
Carat Weight 2.92 CARATS
Color Grade G
Clarity Grade INTERNALLY FLAWLESS
Cut Grade IDEAL

ADDITIONAL GRADING INFORMATION

Polish EXCELLENT
Symmetry EXCELLENT
Fluorescence NONE
Inscription(s) IGI LG636419861

Comments: HEARTS & ARROWS
As Grown - No indication of post-growth treatment.
This Laboratory Grown Diamond was created by High Pressure High Temperature (HPHT) growth process.
Type II

PROPORTIONS



Sample Image Used

CLARITY CHARACTERISTICS



KEY TO SYMBOLS

Red symbols indicate internal characteristics.
Green symbols indicate external characteristics.

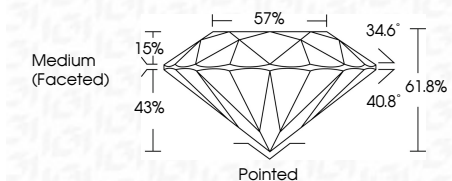


COLOR

D E F G H I J Faint Very Light Light

CLARITY

IF VS 1-2 VS 1-2 SI 1-2 I 1-3
Internally Flawless Very Very Slightly Included Very Slightly Included Slightly Included Included



ADDITIONAL GRADING INFORMATION

Polish EXCELLENT
Symmetry EXCELLENT
Fluorescence NONE
Inscription(s) IGI LG636419861
Comments: HEARTS & ARROWS
As Grown - No indication of post-growth treatment.
This Laboratory Grown Diamond was created by High Pressure High Temperature (HPHT) growth process.
Type II



IGI

Summary table with fields: June 5, 2024, IGI Report No. LG636419861, ROUND BRILLIANT, 9.13 - 9.16 X 5.65 MM, 2.92 CARATS, G, G, IDEAL, 61.8%, 57%, Medium (Faceted), Pointed, EXCELLENT, EXCELLENT, NONE, IGI LG636419861, Comments: HEARTS & ARROWS, As Grown - No indication of post-growth treatment. This Laboratory Grown Diamond was created by High Pressure High Temperature (HPHT) growth process. Type II