



ELECTRONIC COPY

LABORATORY GROWN DIAMOND REPORT

May 30, 2024
IGI Report Number LG636426895
Description LABORATORY GROWN DIAMOND
Shape and Cutting Style PRINCESS CUT
Measurements 7.35 X 7.27 X 5.25 MM

GRADING RESULTS

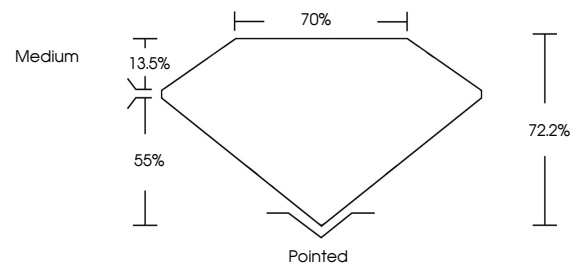
Carat Weight 2.49 CARATS
Color Grade G
Clarity Grade VS 1

ADDITIONAL GRADING INFORMATION

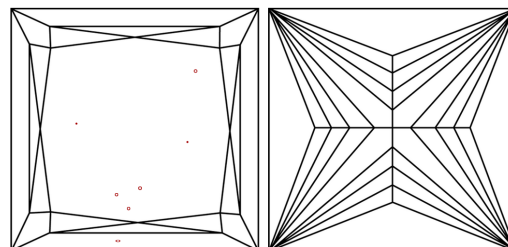
Polish EXCELLENT
Symmetry EXCELLENT
Fluorescence NONE
Inscription(s) IGI LG636426895

Comments: This Laboratory Grown Diamond was created by Chemical Vapor Deposition (CVD) growth process. Type IIa

PROPORTIONS

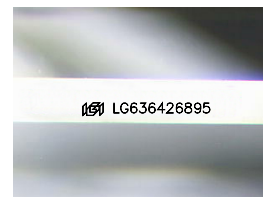


CLARITY CHARACTERISTICS



KEY TO SYMBOLS

Red symbols indicate internal characteristics.
Green symbols indicate external characteristics.



Sample Image Used

COLOR

Color scale from D to J, with 'Faint', 'Very Light', and 'Light' labels.

CLARITY

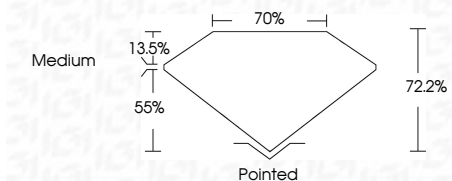
Clarity scale from IF to I1-3, with 'Internally Flawless', 'Very Very Slightly Included', 'Very Slightly Included', 'Slightly Included', and 'Included' labels.



May 30, 2024
IGI Report Number LG636426895
Description LABORATORY GROWN DIAMOND
Shape and Cutting Style PRINCESS CUT
Measurements 7.35 X 7.27 X 5.25 MM

GRADING RESULTS

Carat Weight 2.49 CARATS
Color Grade G
Clarity Grade VS 1



ADDITIONAL GRADING INFORMATION

Polish EXCELLENT
Symmetry EXCELLENT
Fluorescence NONE
Inscription(s) IGI LG636426895
Comments: This Laboratory Grown Diamond was created by Chemical Vapor Deposition (CVD) growth process. Type IIa



IGI



Summary of report details including date, report number, measurements, carat weight, color grade, clarity grade, and grading information.

Comments: This Laboratory Grown Diamond was created by Chemical Vapor Deposition (CVD) growth process. Type IIa