



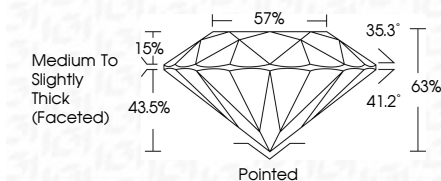
ELECTRONIC COPY

LG636427776
Report verification at igi.org



June 3, 2024
IGI Report Number **LG636427776**
Description **LABORATORY GROWN DIAMOND**
Shape and Cutting Style **ROUND BRILLIANT**
Measurements **8.06 - 8.09 X 5.09 MM**

GRADING RESULTS
Carat Weight **2.07 CARATS**
Color Grade **G**
Clarity Grade **VVS 2**
Cut Grade **EXCELLENT**



ADDITIONAL GRADING INFORMATION
Polish **EXCELLENT**
Symmetry **EXCELLENT**
Fluorescence **NONE**
Inscription(s) **IGI LG636427776**
Comments: This Laboratory Grown Diamond was created by Chemical Vapor Deposition (CVD) growth process. Type IIa



June 3, 2024
IGI Report No. **LG636427776**
ROUND BRILLIANT
8.06 - 8.09 X 5.09 MM
Carat Weight **2.07 CARATS**
Color Grade **G**
Clarity Grade **VVS 2**
Cut Grade **EXCELLENT**
Depth **63%**
Table **15%**
Girdle **Medium To Slightly Thick (Faceted)**
Culet **Pointed**
Polish **EXCELLENT**
Symmetry **EXCELLENT**
Fluorescence **NONE**
Inscriptions(s) **IGI LG636427776**
Comments: This Laboratory Grown Diamond was created by Chemical Vapor Deposition (CVD) growth process. Type IIa

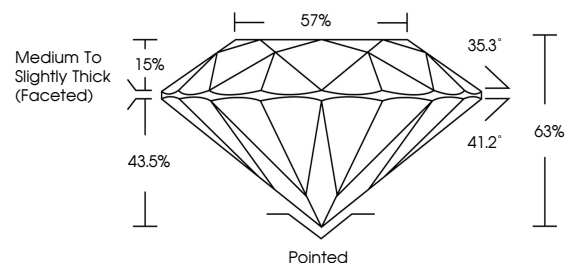
June 3, 2024
IGI Report Number **LG636427776**
Description **LABORATORY GROWN DIAMOND**
Shape and Cutting Style **ROUND BRILLIANT**
Measurements **8.06 - 8.09 X 5.09 MM**

GRADING RESULTS
Carat Weight **2.07 CARATS**
Color Grade **G**
Clarity Grade **VVS 2**
Cut Grade **EXCELLENT**

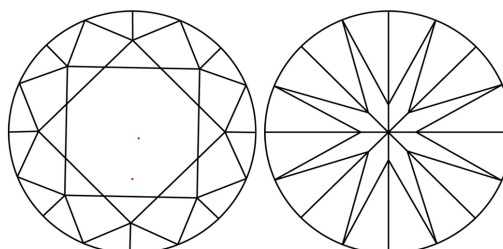
ADDITIONAL GRADING INFORMATION
Polish **EXCELLENT**
Symmetry **EXCELLENT**
Fluorescence **NONE**
Inscription(s) **IGI LG636427776**

Comments: This Laboratory Grown Diamond was created by Chemical Vapor Deposition (CVD) growth process. Type IIa

PROPORTIONS

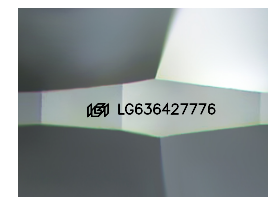


CLARITY CHARACTERISTICS



KEY TO SYMBOLS

Red symbols indicate internal characteristics.
Green symbols indicate external characteristics.



Sample Image Used

COLOR

D E F G H I J Faint Very Light Light

CLARITY

IF	VS ¹⁻²	VS ¹⁻²	SI ¹⁻²	I ¹⁻³
Internally Flawless	Very Very Slightly Included	Very Slightly Included	Slightly Included	Included

