



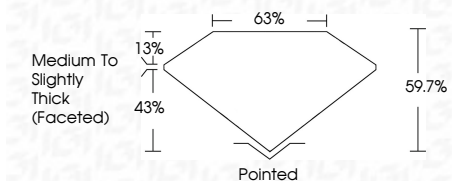
ELECTRONIC COPY

LG636428016 Report verification at igi.org



June 3, 2024 IGI Report Number LG636428016 Description LABORATORY GROWN DIAMOND Shape and Cutting Style OVAL BRILLIANT Measurements 10.75 X 7.45 X 4.45 MM

GRADING RESULTS Carat Weight 2.19 CARATS Color Grade G Clarity Grade VVS 2



ADDITIONAL GRADING INFORMATION Polish EXCELLENT Symmetry EXCELLENT Fluorescence NONE Inscription(s) LG636428016 Comments: This Laboratory Grown Diamond was created by Chemical Vapor Deposition (CVD) growth process. Type IIa



June 3, 2024 IGI Report No LG636428016 OVAL BRILLIANT 10.75 X 7.45 X 4.45 MM 2.19 CARATS G VVS 2 59.7% 43% Medium to Slightly Thick (Faceted) Pointed EXCELLENT EXCELLENT NONE LG636428016

Comments: This Laboratory Grown Diamond was created by Chemical Vapor Deposition (CVD) growth process. Type IIa

LABORATORY GROWN DIAMOND REPORT

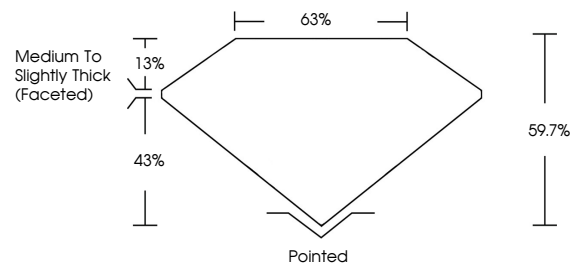
June 3, 2024 IGI Report Number LG636428016 Description LABORATORY GROWN DIAMOND Shape and Cutting Style OVAL BRILLIANT Measurements 10.75 X 7.45 X 4.45 MM

GRADING RESULTS Carat Weight 2.19 CARATS Color Grade G Clarity Grade VVS 2

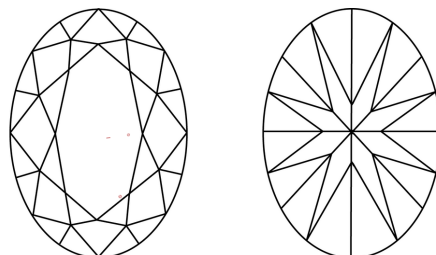
ADDITIONAL GRADING INFORMATION Polish EXCELLENT Symmetry EXCELLENT Fluorescence NONE Inscription(s) LG636428016

Comments: This Laboratory Grown Diamond was created by Chemical Vapor Deposition (CVD) growth process. Type IIa

PROPORTIONS



CLARITY CHARACTERISTICS



KEY TO SYMBOLS

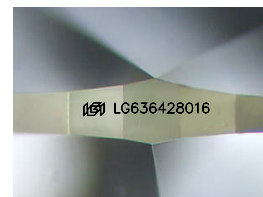
Red symbols indicate internal characteristics. Green symbols indicate external characteristics.

COLOR

D E F G H I J Faint Very Light Light

CLARITY

IF VVS 1-2 VS 1-2 SI 1-2 I 1-3 Internally Flawless Very Very Slightly Included Very Slightly Included Slightly Included Included



Sample Image Used

