



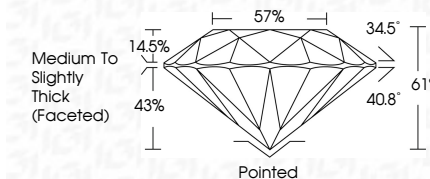
ELECTRONIC COPY

LG636428106 Report verification at igi.org



June 1, 2024 IGI Report Number LG636428106 Description LABORATORY GROWN DIAMOND Shape and Cutting Style ROUND BRILLIANT Measurements 6.81 - 6.84 X 4.17 MM

GRADING RESULTS Carat Weight 1.19 CARAT Color Grade D Clarity Grade VS 2 Cut Grade IDEAL



ADDITIONAL GRADING INFORMATION Polish EXCELLENT Symmetry EXCELLENT Fluorescence NONE Inscription(s) IGI LG636428106 Comments: This Laboratory Grown Diamond was created by Chemical Vapor Deposition (CVD) growth process. Type IIa



June 1, 2024 IGI Report No LG636428106 ROUND BRILLIANT 6.81 - 6.84 X 4.17 MM 1.19 CARAT D VS 2 IDEAL 61% 57% Medium To Slightly Thick (Faceted) Pointed EXCELLENT EXCELLENT NONE NONE IGI LG636428106

LABORATORY GROWN DIAMOND REPORT

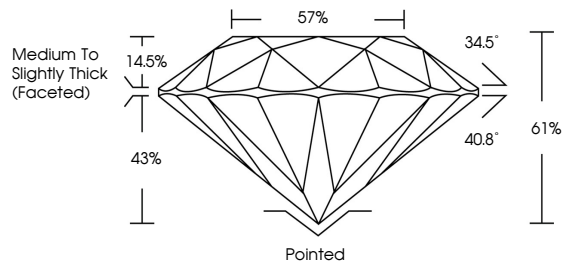
June 1, 2024 IGI Report Number LG636428106 Description LABORATORY GROWN DIAMOND Shape and Cutting Style ROUND BRILLIANT Measurements 6.81 - 6.84 X 4.17 MM

GRADING RESULTS Carat Weight 1.19 CARAT Color Grade D Clarity Grade VS 2 Cut Grade IDEAL

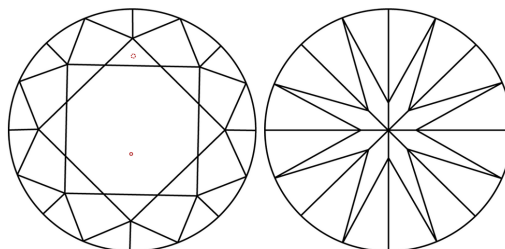
ADDITIONAL GRADING INFORMATION Polish EXCELLENT Symmetry EXCELLENT Fluorescence NONE Inscription(s) IGI LG636428106

Comments: This Laboratory Grown Diamond was created by Chemical Vapor Deposition (CVD) growth process. Type IIa

PROPORTIONS

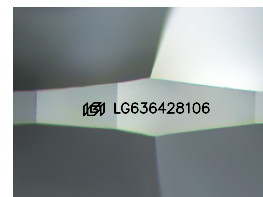


CLARITY CHARACTERISTICS



KEY TO SYMBOLS

Red symbols indicate internal characteristics. Green symbols indicate external characteristics.



Sample Image Used

COLOR

D E F G H I J Faint Very Light Light

CLARITY

IF VS 1-2 VS 1-2 SI 1-2 I 1-3 Internally Flawless Very Very Slightly Included Very Slightly Included Slightly Included Included

