



**ELECTRONIC COPY**

LG636431029  
Report verification at igi.org



June 1, 2024

IGI Report Number **LG636431029**

Description **LABORATORY GROWN DIAMOND**

Shape and Cutting Style **ROUND BRILLIANT**

Measurements **10.00 - 10.06 X 6.09 MM**

**GRADING RESULTS**

Carat Weight **3.73 CARATS**

Color Grade **F**

Clarity Grade **VS 2**

Cut Grade **IDEAL**

June 1, 2024

IGI Report Number **LG636431029**

Description **LABORATORY GROWN DIAMOND**

Shape and Cutting Style **ROUND BRILLIANT**

Measurements **10.00 - 10.06 X 6.09 MM**

**GRADING RESULTS**

Carat Weight **3.73 CARATS**

Color Grade **F**

Clarity Grade **VS 2**

Cut Grade **IDEAL**

**ADDITIONAL GRADING INFORMATION**

Polish **EXCELLENT**

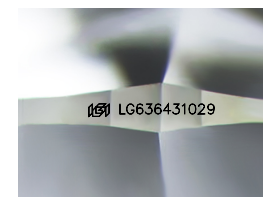
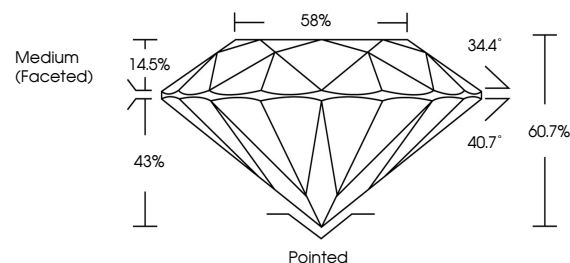
Symmetry **EXCELLENT**

Fluorescence **NONE**

Inscription(s) **LG636431029**

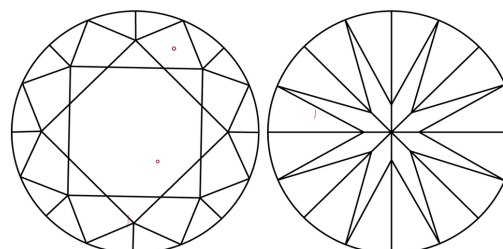
Comments: This Laboratory Grown Diamond was created by Chemical Vapor Deposition (CVD) growth process.  
Type IIa

**PROPORTIONS**



Sample Image Used

**CLARITY CHARACTERISTICS**



**KEY TO SYMBOLS**

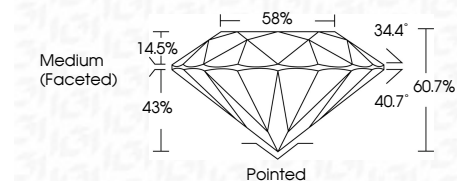
Red symbols indicate internal characteristics.  
Green symbols indicate external characteristics.

**COLOR**

D E F G H I J Faint Very Light Light

**CLARITY**

IF	VS <sup>1-2</sup>	VS <sup>1-2</sup>	SI <sup>1-2</sup>	I <sup>1-3</sup>
Internally Flawless	Very Very Slightly Included	Very Slightly Included	Slightly Included	Included



**ADDITIONAL GRADING INFORMATION**

Polish **EXCELLENT**

Symmetry **EXCELLENT**

Fluorescence **NONE**

Inscription(s) **LG636431029**

Comments: This Laboratory Grown Diamond was created by Chemical Vapor Deposition (CVD) growth process.  
Type IIa



**IGI**

June 1, 2024  
IGI Report No LG636431029  
ROUND BRILLIANT

3.73 CARATS  
F

10.00 - 10.06 X 6.09 MM

Color Grade VS 2  
Clarity Grade IDEAL  
Depth 60.7%  
Table 58%  
Girdle Medium (Faceted)

Culet Pointed  
Polish EXCELLENT  
Symmetry EXCELLENT  
Fluorescence NONE  
Inscriptions(s) IGI LG636431029

Comments: This Laboratory Grown Diamond was created by Chemical Vapor Deposition (CVD) growth process.  
Type IIa