



**ELECTRONIC COPY**

## LABORATORY GROWN DIAMOND REPORT

June 3, 2024	
IGI Report Number	LG636431829
Description	LABORATORY GROWN DIAMOND
Shape and Cutting Style	CUT CORNERED RECTANGULAR MODIFIED BRILLIANT
Measurements	7.87 X 5.59 X 3.94 MM

## GRADING RESULTS

Carat Weight	1.53 CARAT
Color Grade	G
Clarity Grade	VS 1

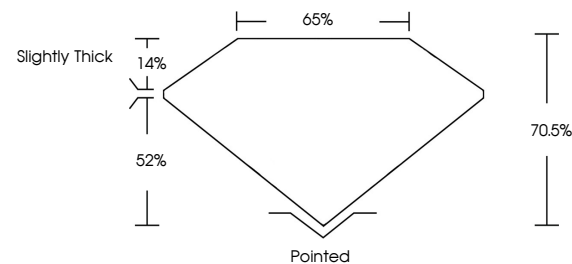
### ADDITIONAL GRADING INFORMATION

Polish	EXCELLENT
Symmetry	EXCELLENT
Fluorescence	NONE
Inscription(s)	 LG636431829

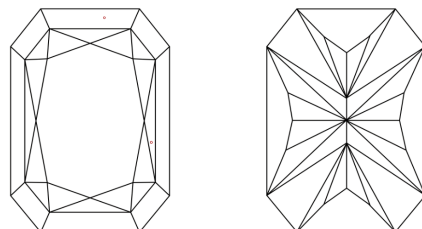
Comments: This Laboratory Grown Diamond was created by Chemical Vapor Deposition (CVD) growth process.  
Type IIa

LG636431829  
Report verification at [lgi.org](https://lgi.org)

## PROPORTIONS

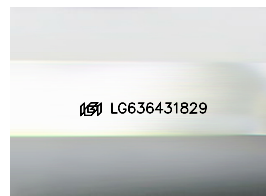


## CLARITY CHARACTERISTICS



## KEY TO SYMBOLS

Red symbols indicate internal characteristics.  
Green symbols indicate external characteristics.



Sample Image Used

**COLOR**

D E F G H I J Faint Very Light Light

## CLARITY

IF	VVS <sup>1,2</sup>	VS <sup>1,2</sup>	SI <sup>1,2</sup>	I <sup>1,3</sup>
Internally Flawless	Very Very Slightly Included	Very Slightly Included	Slightly Included	Included



© IGI 2020, International Gemological Institute

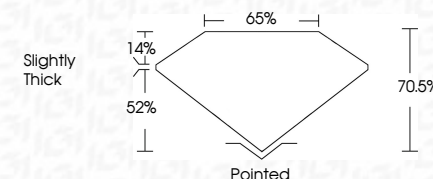
FD - 10 20

**www.igi.org**

DIAMOND REPORT



June 3, 2024	
IGI Report Number	LG636431829
Description	LABORATORY GROWN DIAMOND
Shape and Cutting Style	CUT CORNERED RECTANGULAR MODIFIED BRILLIANT
Measurements	7.87 X 5.59 X 3.94 MM
GRADING RESULTS	
Carat Weight	1.53 CARAT
Color Grade	G
Clarity Grade	VS 1



### ADDITIONAL GRADING INFORMATION

Polish	EXCELLENT
Symmetry	EXCELLENT
Fluorescence	NONE
Inscription(s)	(GSI) LG636431825
Comments: This Laboratory Grown Diamond was created by Chemical Vapor Deposition (CVD) growth process.	
Type IIa	



June 3, 2024	GI Report No. LG664431829	1.53 CARAT	Vs 1	slightly thick	Pointed	NONE	#691 LG664431829
GI CUT CORNBED RECT. MODIFIED BRILLIANT	1.87 x 5.69 x 3.94 MM	70.0%	65%		EXCELLENT		
Color Weight	Color Grade	Depth	Table		Symmetry		
					Fluorescence		
			Grille		Inscription(s)		
				Quiet			
				Polish			

Comments:  
 This Laboratory Grown Diamond was  
 created by Chemical Vapor Deposition  
 (CVD) growth process.  
 Type IIa